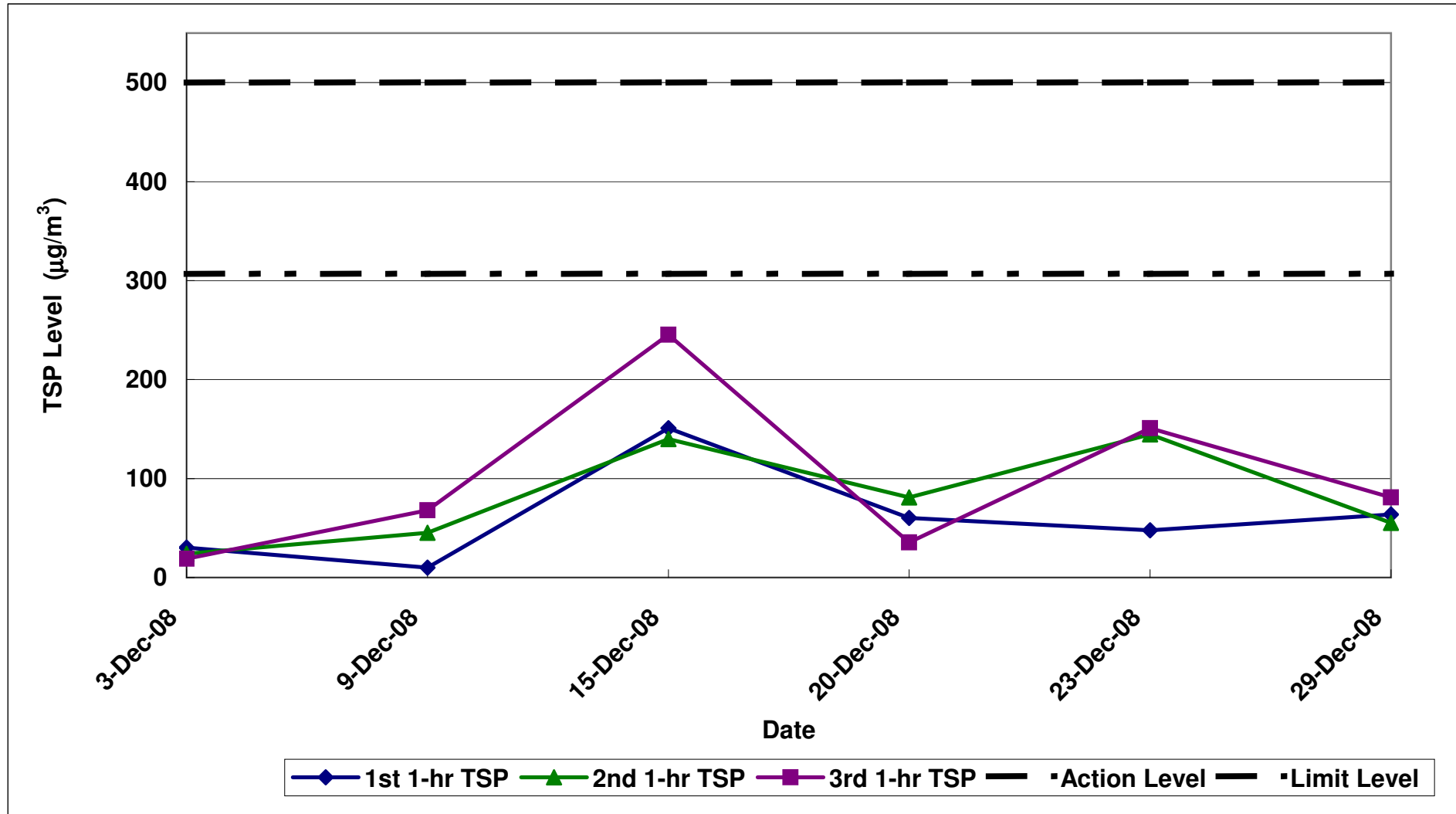


Contract No. DC/2007/12 - Design and Construction of Tsuen Wan Drainage Tunnel

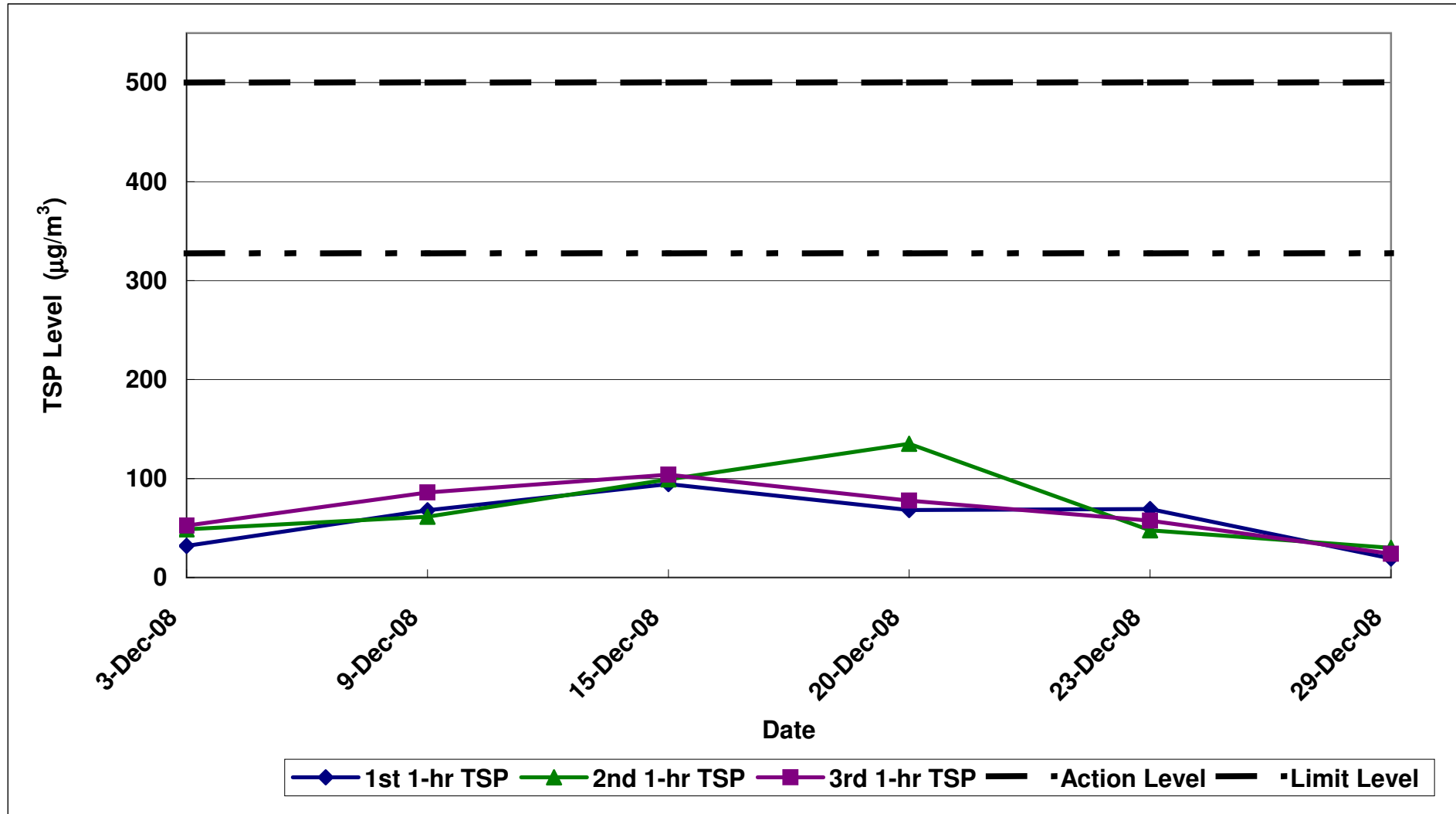
Air Quality Impact Monitoring Results (1-Hour TSP)

Location	Monitoring Date	Weather Conditions	Wind Speed with Direction (m/s)	Temp (°C)	Timer-I (m)	Timer-F (m)	Time (mins)	Flow-I (CFM)	Flow-F (CFM)	Flow-I (m³/min)	Flow-F (m³/min)	Flow-avg (m³/min)	Volume (m³)	Weight-I (g)	Weight-F (g)	Weight-diff. (g)	1-hr TSP (µg/m³)	Average 1-Hr TSP (µg/m³)	Action/Limit Levels (µg/m³)	Observation / Site Condition	Remark
Sik Sik Yuen Ho Fung College - Intake (ASR1)	3-Dec-08	Sunny	0.7N	20	565339	565439	60.0	40	40	1.32	1.32	1.32	79.48	2.8296	2.832	0.0024	30.2	24.3	306.6/500	Nil	Nil
		Sunny	0.7N	20	565439	565539	60.0	40	40	1.32	1.32	1.32	79.48	2.8288	2.8307	0.0019	29.9				
		Sunny	0.7N	20	565539	565639	60.0	40	40	1.32	1.32	1.32	79.48	2.8694	2.8709	0.0015	18.9				
	9-Dec-08	Sunny	0.4NE	22	565639	565739	60.0	40	40	1.32	1.32	1.32	79.48	2.8851	2.8859	0.0008	10.1	41.1	306.6/500	Piling and excavator operation	Nil
		Sunny	0.4NE	22	565739	565839	60.0	40	40	1.32	1.32	1.32	79.48	2.8172	2.8208	0.0036	45.3				
		Sunny	0.4NE	22	565839	565939	60.0	40	40	1.32	1.32	1.32	79.48	2.7158	2.7162	0.0004	67.9				
	15-Dec-08	Sunny	0.5NE	18	565939	566039	60.0	40	40	1.36	1.36	1.36	81.54	2.7517	2.7640	0.0123	150.8	178.6	306.6/500	Steel cutting, piling	Nil
		Sunny	0.5NE	18	566039	566139	60.0	40	40	1.36	1.36	1.36	81.54	2.7134	2.7248	0.0114	139.8				
		Sunny	0.5NE	18	566139	566239	60.0	40	40	1.36	1.36	1.36	81.54	2.7057	2.7257	0.0200	245.3				
	20-Dec-08	Sunny	0.7E	17	566239	566339	60.0	40	40	1.36	1.36	1.36	81.54	2.8549	2.8598	0.0049	60.1	58.9	306.6/500	Piling	Nil
		Sunny	0.7E	17	566339	566439	60.0	40	40	1.36	1.36	1.36	81.54	2.8830	2.8896	0.0066	80.9				
		Sunny	0.7E	17	566439	566539	60.0	40	40	1.36	1.36	1.36	81.54	2.8549	2.8578	0.0029	35.6				
23-Dec-08	Sunny	0.5N	18	566539	566639	60.0	40	40	1.36	1.36	1.36	81.54	2.7158	2.7207	0.0059	47.8	114.5	306.6/500	Piling	Nil	
	Sunny	0.5N	18	566639	566739	60.0	40	40	1.36	1.36	1.36	81.54	2.7648	2.7766	0.0118	144.7					
	Sunny	0.5N	18	566739	566839	60.0	40	40	1.36	1.36	1.36	81.54	2.8435	2.8558	0.0123	150.8					
29-Dec-08	Sunny	0.5N	16	566839	566939	60.0	40	40	1.36	1.36	1.36	81.54	2.8816	2.8868	0.0052	63.8	66.6	306.6/500	Piling	Nil	
	Sunny	0.5N	16	566939	567039	60.0	40	40	1.36	1.36	1.36	81.54	2.8335	2.8380	0.0045	55.2					
	Sunny	0.5N	16	567039	567139	60.0	40	40	1.36	1.36	1.36	81.54	2.8296	2.8362	0.0066	80.9					
Hong Hai Chee Hong Temple - Intake (ASR3)	3-Dec-08	Sunny	0.7N	20	533899	533999	60.0	40	40	1.30	1.30	1.30	78.03	2.8459	2.8484	0.0025	38.0	44.4	327.4/500	Crane operation	Nil
		Sunny	0.7N	20	533999	534099	60.0	40	40	1.30	1.30	1.30	78.03	2.8285	2.8323	0.0038	48.7				
		Sunny	0.7N	20	534099	534199	60.0	40	40	1.30	1.30	1.30	78.03	2.8282	2.8323	0.0041	52.5				
	9-Dec-08	Sunny	0.5N	22	534199	534299	60.0	40	40	1.30	1.30	1.30	78.03	2.8312	2.8365	0.0053	67.9	71.8	327.4/500	Nil	Nil
		Sunny	0.5N	22	534299	534389	60.0	40	40	1.30	1.30	1.30	78.03	2.8644	2.8692	0.0048	61.5				
		Sunny	0.5N	21	534389	534489	60.0	40	40	1.39	1.39	1.39	83.68	2.8579	2.8639	0.0060	94.4				
	15-Dec-08	Sunny	0.5N	21	534489	534589	60.0	40	40	1.39	1.39	1.39	83.68	2.8514	2.8597	0.0083	99.2	99.2	327.4/500	Nil	Nil
		Sunny	0.5N	21	534589	534689	60.0	40	40	1.39	1.39	1.39	83.68	2.9042	2.9129	0.0087	104.0				
		Sunny	0.6N	18	534689	534789	60.0	40	40	1.39	1.39	1.39	83.68	2.7674	2.7731	0.0057	68.1				
	20-Dec-08	Sunny	0.6N	18	534789	534889	60.0	40	40	1.39	1.39	1.39	83.68	2.8536	2.8649	0.0113	135.0	93.6	327.4/500	Nil	Nil
		Sunny	0.6N	18	534889	534989	60.0	40	40	1.39	1.39	1.39	83.68	2.8118	2.8183	0.0065	77.7				
		Sunny	0.5N	18	534989	535089	60.0	40	40	1.39	1.39	1.39	83.68	2.7627	2.7885	0.0258	69.3				
23-Dec-08	Sunny	0.5N	18	535089	535189	60.0	40	40	1.39	1.39	1.39	83.68	2.791	2.795	0.0040	47.8	58.2	327.4/500	Nil	Nil	
	Sunny	0.5N	18	535189	535289	60.0	40	40	1.39	1.39	1.39	83.68	2.827	2.8318	0.0048	57.4					
	Sunny	0.5N	16	535289	535389	60.0	40	40	1.39	1.39	1.39	83.68	2.7933	2.7949	0.0016	19.1					
29-Dec-08	Sunny	0.5N	16	535389	535489	60.0	40	40	1.39	1.39	1.39	83.68	2.7927	2.7952	0.0025	29.9	24.3	327.4/500	Nil	Nil	
	Sunny	0.5N	16	535489	535589	60.0	40	40	1.39	1.39	1.39	83.68	2.8038	2.8058	0.0020	23.9					
	Sunny	0.5N	20	588893	588993	60.0	39	39	1.30	1.30	1.30	77.90	2.8231	2.826	0.0029	37.2					
Long Beach Gardens - Outfall (ASR8)	3-Dec-08	Sunny	0.5N	20	588993	589093	60.0	39	39	1.30	1.30	1.30	77.90	2.8358	2.8403	0.0045	57.8	48.4	336.6/500	Moving of concrete block using backhoe	Nil
		Sunny	0.5N	20	589093	589193	60.0	39	39	1.30	1.30	1.30	77.90	2.8514	2.8553	0.0039	50.1				
		Sunny	0.7N	22	589193	589293	60.0	40	40	1.33	1.33	1.33	79.65	2.7351	2.7409	0.0058	72.8				
	9-Dec-08	Sunny	0.7N	22	589293	589393	60.0	40	40	1.33	1.33	1.33	79.65	2.7392	2.7467	0.0075	92.3	93.1	336.6/500	Air compressor operation	Nil
		Sunny	0.7N	22	589393	589493	60.0	40	40	1.33	1.33	1.33	79.65	2.7233	2.7324	0.0091	114.2				
		Sunny	0.4E	17	589493	589593	60.0	40	40	1.37	1.37	1.37	81.91	2.7346	2.7420	0.0074	90.3				
	15-Dec-08	Sunny	0.4E	17	589593	589693	60.0	40	40	1.37	1.37	1.37	81.91	2.7531	2.7580	0.0049	59.8	68.4	336.6/500	Excavation, Breaking by backhoe	Nil
		Sunny	0.4E	17	589693	589793	60.0	40	40	1.37	1.37	1.37	81.91	2.7184	2.7229	0.0045	54.9				
		Sunny	0.4E	17	589793	589893	60.0	40	40	1.37	1.37	1.37	81.91	2.7669	2.7714	0.0045	54.9				
	20-Dec-08	Sunny	0.4E	17	589893	589993	60.0	40	40	1.37	1.37	1.37	81.91	2.7609	2.7626	0.0017	20.8	64.7	336.6/500	Excavator backhoe	Nil
		Sunny	0.4E	17	589993	590093	60.0	40	40	1.37	1.37	1.37	81.91	2.7641	2.7738	0.0097	118.4				
		Sunny	0.5N	18	590093	590193	60.0	40	40	1.37	1.37	1.37	81.91	2.8022	2.8095	0.0073	89.1				
23-Dec-08	Sunny	0.5N	18	590193	590293	60.0	40	40	1.37	1.37	1.37	81.91	2.7575	2.7640	0.0065	79.4	86.3	336.6/500	Excavator backhoe	Nil	
	Sunny	0.5N	18	590293	590393	60.0	40	40	1.37	1.37	1.37	81.91	2.7702	2.7776	0.0074	90.3					
	Sunny	0.5N	16	590393	590493	60.0	40	40	1.37	1.37	1.37	81.91	2.7639	2.7725	0.0086	105.0					
29-Dec-08	Sunny	0.5N	16	590493	590593	60.0	40	40	1.37	1.37	1.37	81.91	2.7815	2.7882	0.0067	81.8	89.1	336.6/500	Breaking by backhoe	Nil	
	Sunny	0.5N	16	590593	590693	60.0	40	40	1.37	1.37	1.37	81.91	2.7327	2.7393	0.0066	80.6					
	Sunny	0.6N	20	520793	520893	60.0	40	40	1.26	1.26	1.26	75.52	2.8825	2.8849	0.0024	31.8					
Greenview Terrace - Outfall (ASR9)	3-Dec-08	Sunny	0.6N	20	520893	520993	60.0	40	40	1.26	1.26	1.26	75.52	2.8257	2.8335	0.0078	103.3	67.5	329.2/500	Moving of concrete block using backhoe	Nil
		Sunny	0.6N	20	520993	521093	60.0	40	40	1.26	1.26	1.26	75.52	2.8843	2.8944	0.0101	67.5				
		Sunny	0.6N	22	521093	521193	60.0	40	40	1.26	1.26	1.26	75.52	2.8133	2.8287	0.0154	203.9				
	9-Dec-08	Sunny	0.6N	22	521193	521293	60.0	40	40	1.26	1.26	1.26	75.52	2.7543	2.7649	0.0106	140.4	166.8	329.2/500	Air compressor operation	Nil
		Sunny	0.6N	22	521293	521393	60.0	40	40	1.26	1.26	1.26	75.52	2.7228	2.7346	0.0118	156.2				
		Sunny	0.8E	17	521393	521493	60.0	40	40	1.26	1.26	1.26	75.69	2.7303	2.7428	0.0125	165.2				
	15-Dec-08	Sunny	0.8E	17	521493	521593	60.0	40	40	1.26	1.26	1.26	75.69	2.7058	2.7114	0.0056	74.0	105.7	329.2/500	Nil	Nil
		Sunny	0.8E	17	521593	521693	60.0	40	40	1.26	1.26	1.26	75.69	2.7129	2.7188						

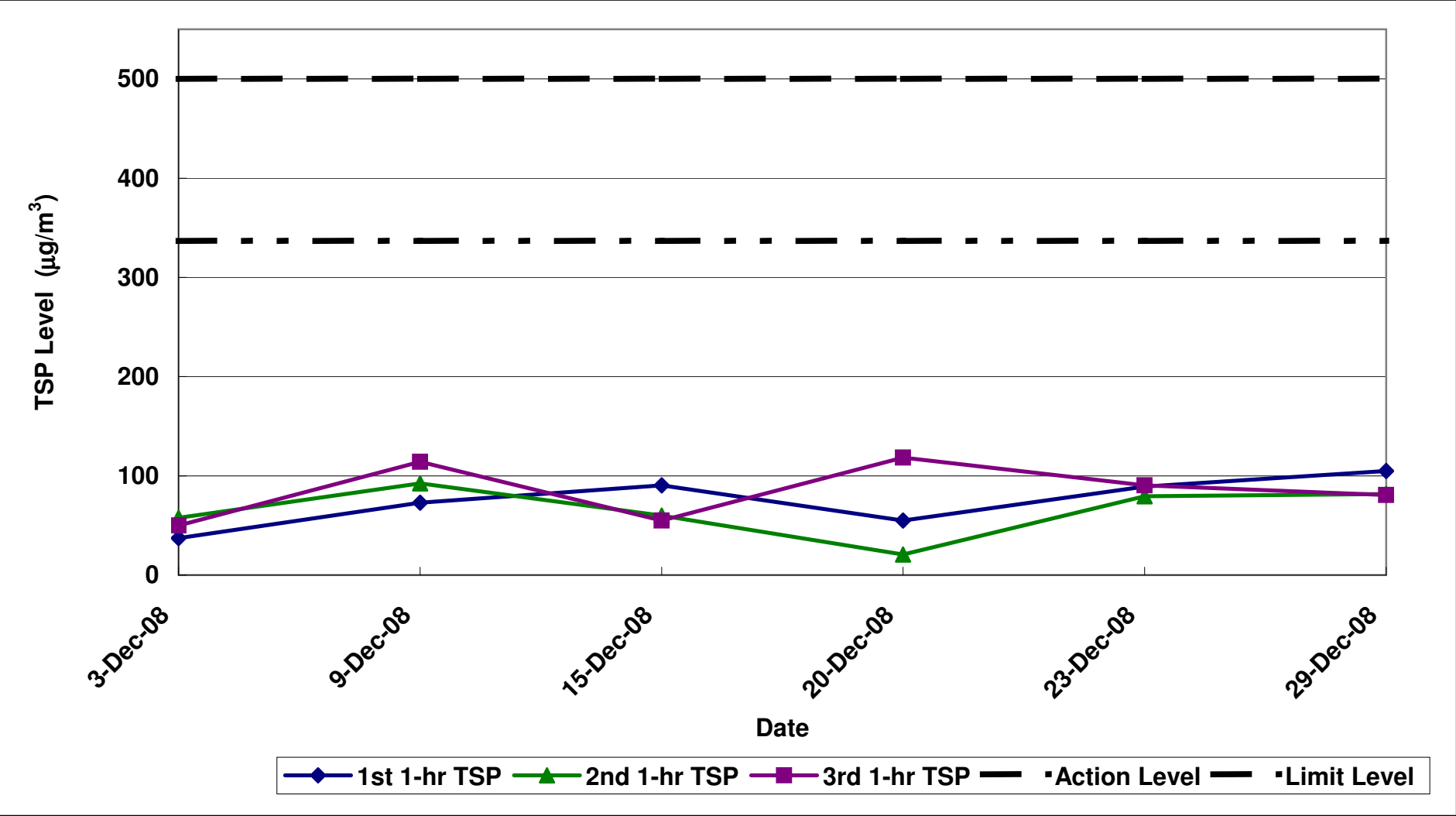
Contract No. DC/2007/12 - Design and Construction of Tsuen Wan Drainage Tunnel
Air Quality Monitoring (1-hr TSP) Results at Sik Sik Yuen Ho Fung College - Intake (ASR1)
Dec-08



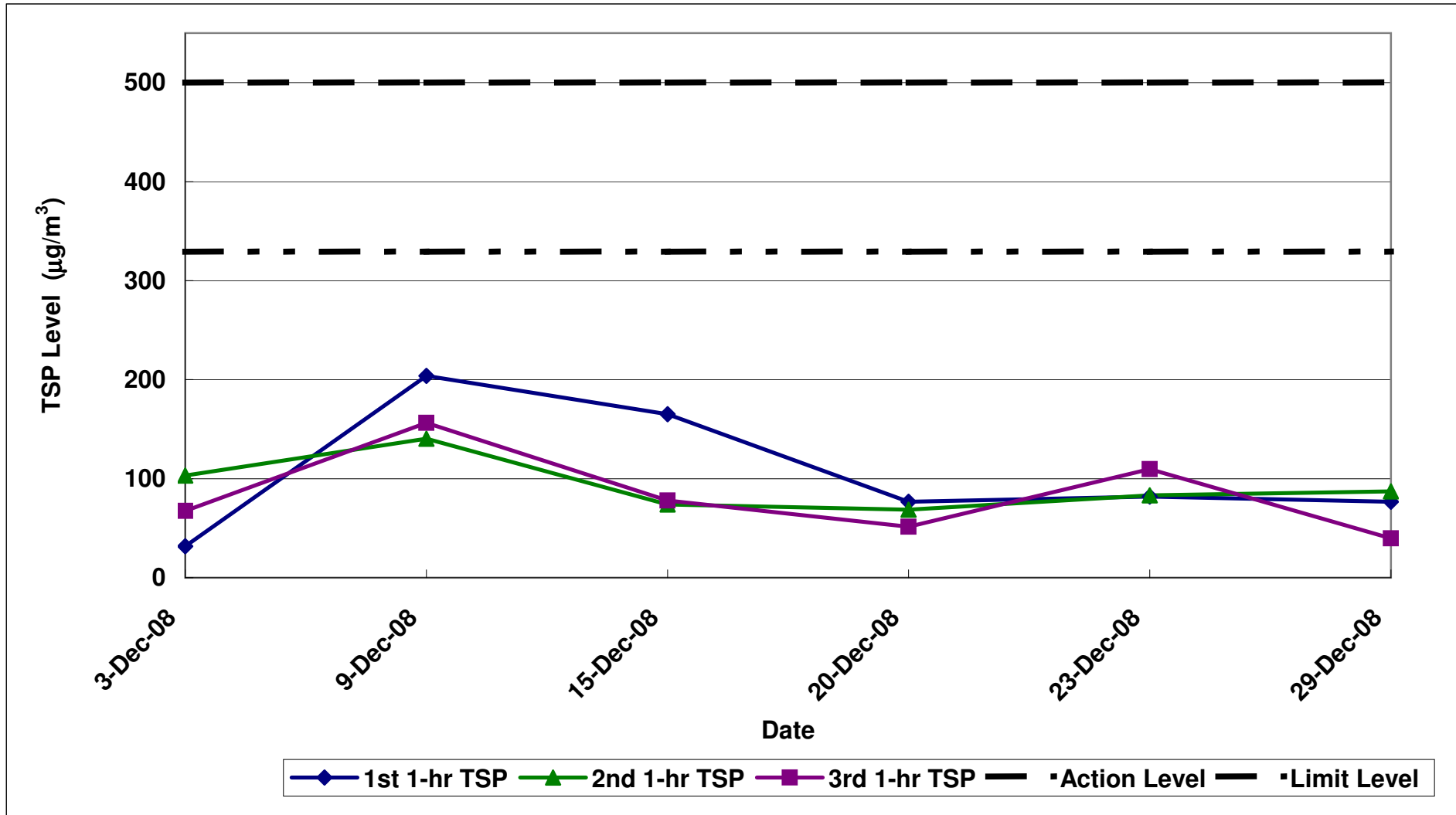
Contract No. DC/2007/12 - Design and Construction of Tsuen Wan Drainage Tunnel
Air Quality Monitoring (1-hr TSP) Results at Hong Hoi Chee Hong Temple - Intake (ASR3)
Dec-08



Contract No. DC/2007/12 - Design and Construction of Tsuen Wan Drainage Tunnel
Air Quality Monitoring (1-hr TSP) Results at Long Beach Gardens - Outfall (ASR8)
Dec-08



Contract No. DC/2007/12 - Design and Construction of Tsuen Wan Drainage Tunnel
Air Quality Monitoring (1-hr TSP) Results at Greenview Terrance - Outfall (ASR9)
Dec-08



Contract No. DC/2007/12 - Design and Construction of Tsuen Wan Drainage Tunnel

Noise Impact Monitoring Results

Monitoring Locations	Date	Weather Conditions	Temperature (°C)	Wind Speed (m/s)	Wind Direction	Start Time	End Time	BL ¹ dB(A)	LL ² dB(A)	L _{eq} (30min) dB(A)	L ₁₀ (30min) dB(A)	L ₉₀ (30min) dB(A)	CNL ³ dB(A)	Observation / Site Condition	Remark
Sik Sik Yuen Ho Fung College NSR 1	3-Dec-08	Sunny	20	0.7	N	13:15	13:45	66.1	70	61.9	64.4	58.1	-	Nil	Traffic noise, human activities
	9-Dec-08	Sunny	19	0.6	E	14:00	14:30	66.1	65	64.4	68.8	58.0	-	Nil	Traffic Noise
	15-Dec-08	Sunny	19	0.6	E	14:30	15:00	66.1	65	63.7	66.1	59.2	-	Piling working, steel cutting	Traffic noise, human activities
	23-Dec-08	Sunny	18	0.5	N	16:00	16:30	66.1	70	67.0	69.0	64.6	-	Piling working	Traffic Noise
	29-Dec-08	Sunny	16	0.5	N	13:00	13:30	66.1	70	64.7	67.6	61.5	-	Piling working	Traffic Noise
Hong Hoi Chee Hong Temple NSR 3	3-Dec-08	Sunny	20	0.7	N	11:20	11:50	57.9	75	60.4	63.4	57.2	-	Crane operation,excavation by backhoe	Hammer working at other construction site
	9-Dec-08	Sunny	17	0.6	N	11:30	12:00	57.9	75	61.9	64.8	58.8	-	Crane operation	Hammer working at other construction site
	15-Dec-08	Sunny	18	0.5	N	11:30	12:00	57.9	75	65.7	68.6	62.5	-	Excavation by backhoe	Nil
	23-Dec-08	Sunny	18	0.4	N	11:30	12:00	57.9	75	60.7	63.7	57.5	-	Nil	Traffic Noise
	29-Dec-08	Sunny	16	0.5	N	11:00	12:00	57.9	75	61.6	64.6	58.6	-	Nil	Traffic Noise
Squatters NSR 6	3-Dec-08	Sunny	20	0.4	N	16:00	16:30	61.2	75	61.2	64.1	58.1	-	Nil	Dog Darking
	9-Dec-08	Sunny	19	0.4	E	14:30	15:00	61.2	75	59.8	62.9	56.9	-	Nil	Dog Darking
	15-Dec-08	Sunny	20	0.5	E	16:15	16:45	61.2	75	61.4	64.3	57.0	-	Nil	Dog Darking
	23-Dec-08	Sunny	18	0.5	N	13:20	13:50	61.2	75	60.6	63.4	57.2	-	Nil	Dog Darking
	29-Dec-08	Sunny	16	0.4	N	16:05	16:35	61.2	75	61.9	64.8	58.8	-	Nil	Dog Darking
Long Beach Gardens NSR 8	3-Dec-08	Sunny	20	0.5	N	9:05	9:35	60.9	75	60.5	63.5	57.7	-	Moving of concrete block using backhoe	Traffic Noise
	9-Dec-08	Sunny	17	0.4	E	9:05	9:35	60.9	75	62.4	64.9	57.7	-	Nil	Traffic Noise
	15-Dec-08	Sunny	18	0.4	E	9:00	9:30	60.9	75	63.8	65.9	59.7	-	Excavation by backhoe	Traffic Noise
	23-Dec-08	Sunny	18	0.5	N	9:05	9:35	60.9	75	63.9	66.6	59.9	-	Nil	Traffic Noise
	29-Dec-08	Sunny	16	0.4	N	9:15	9:45	60.9	75	63.0	65.2	59.3	-	Nil	Traffic Noise
Greenview Terrace NSR 9	3-Dec-08	Sunny	20	0.6	N	10:00	10:30	59.7	75	61.7	65.1	56.4	-	Moving of concrete block using backhoe	Traffic Noise
	9-Dec-08	Sunny	17	0.7	NE	10:05	10:35	59.7	75	62.9	66.0	58.7	-	Breaking by backhoe	Traffic Noise
	15-Dec-08	Sunny	18	0.9	N	10:00	10:30	59.7	75	61.6	65.3	57.0	-	Excavation by backhoe	Traffic Noise
	23-Dec-08	Sunny	18	0.5	N	10:05	10:35	59.7	75	63.0	64.5	60.2	-	Nil	Traffic Noise
	29-Dec-08	Sunny	16	0.5	N	10:15	10:45	59.7	75	64.6	66.9	62.3	-	Nil	Traffic Noise

1: Baseline Noise Level

2: Limit Level

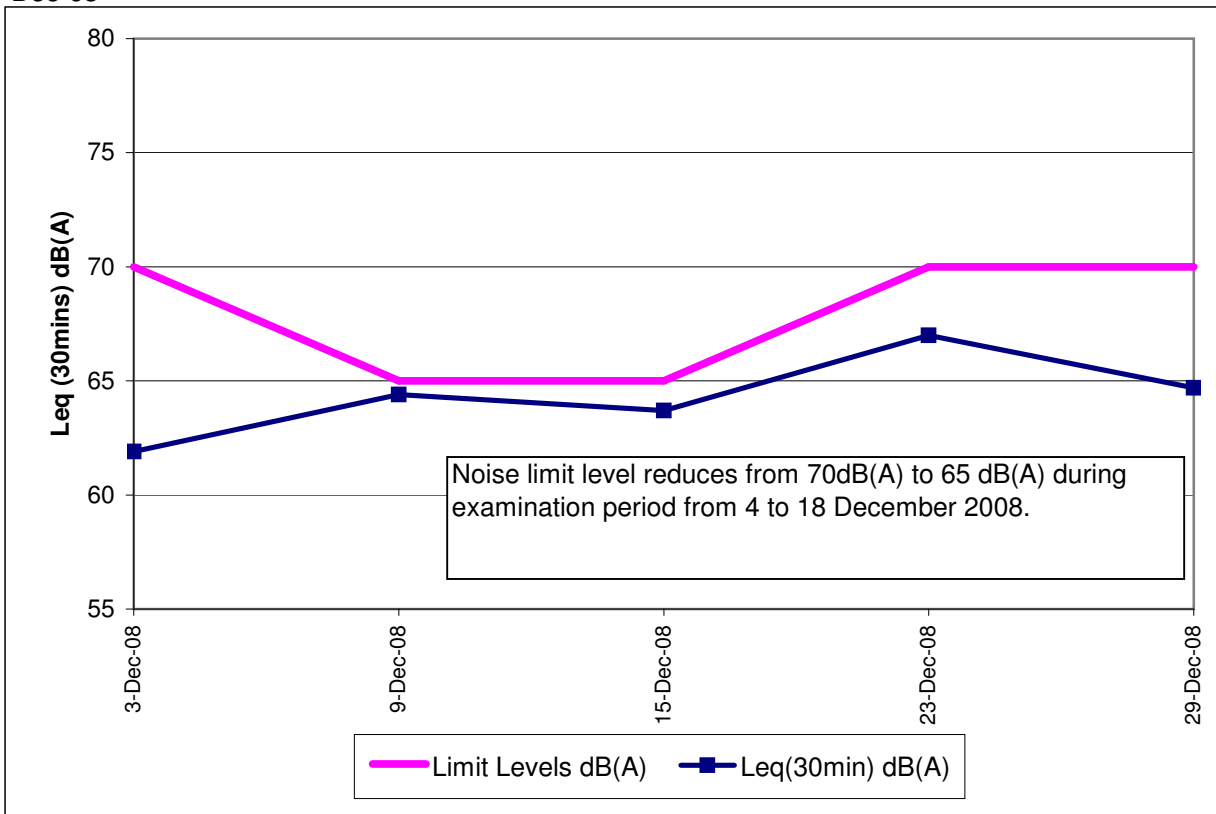
3: Corrected Noise Level

Note:

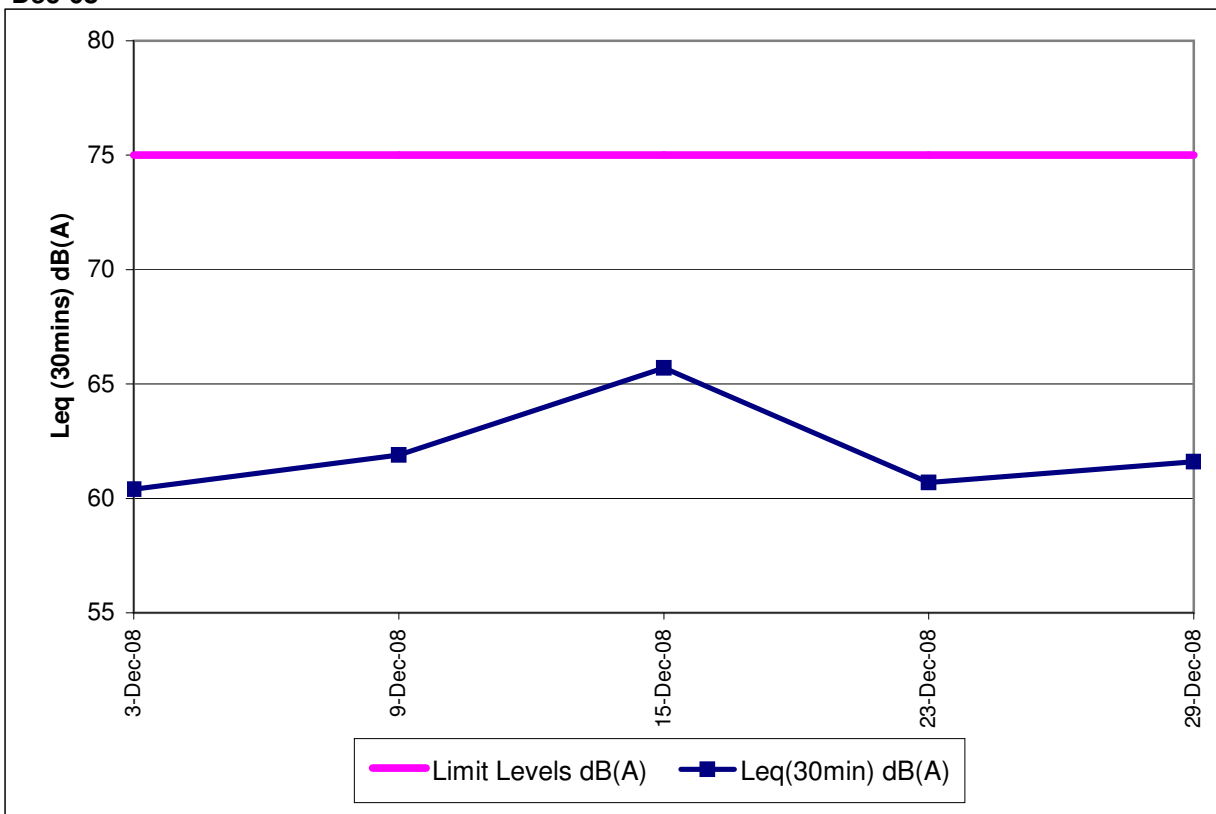
The limit level of NSR1 is 65dB(A) during school examination period.

Red Bold indicates an exceedance of Limit Level

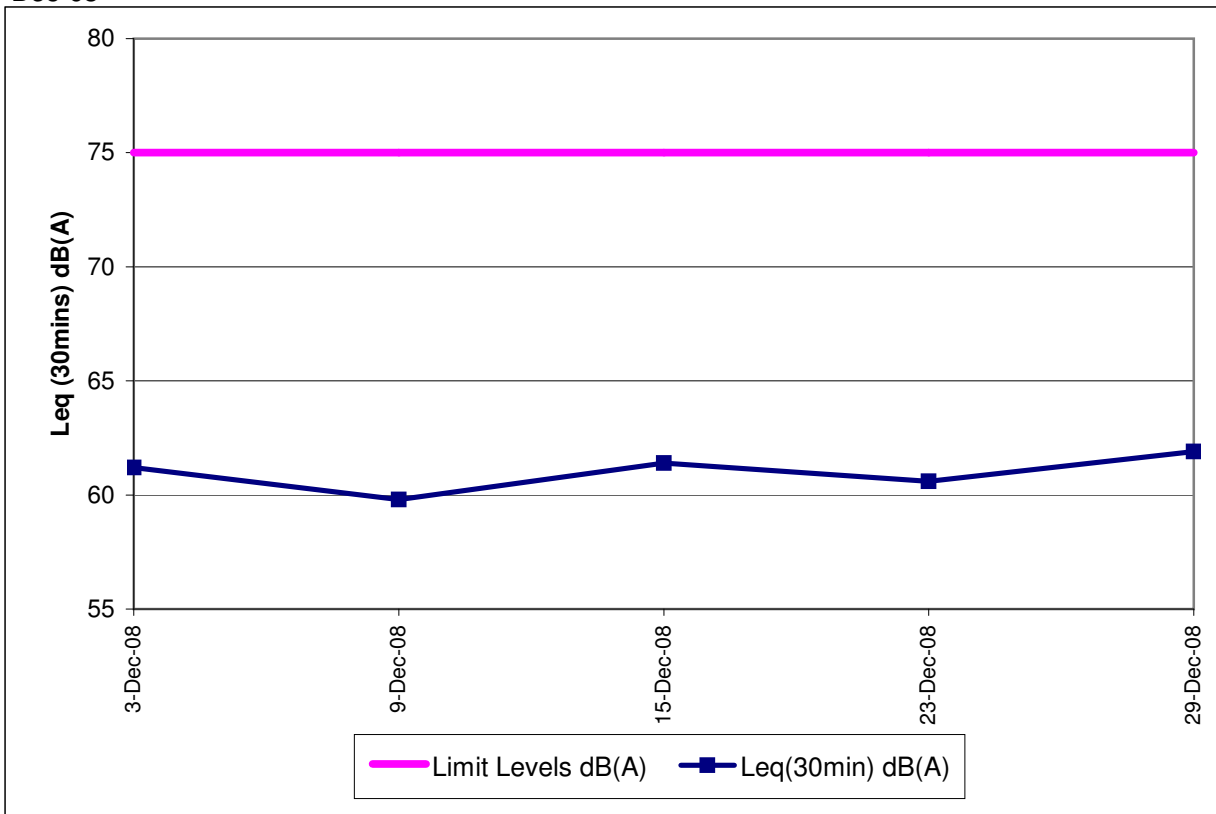
**Contract No. DC/2007/12 - Design and Construction of Tsuen Wan Drainage Tunnel
 Noise Monitoring Results at Sik Sik Yuen Ho Fung College (NSR 1)
 Dec-08**



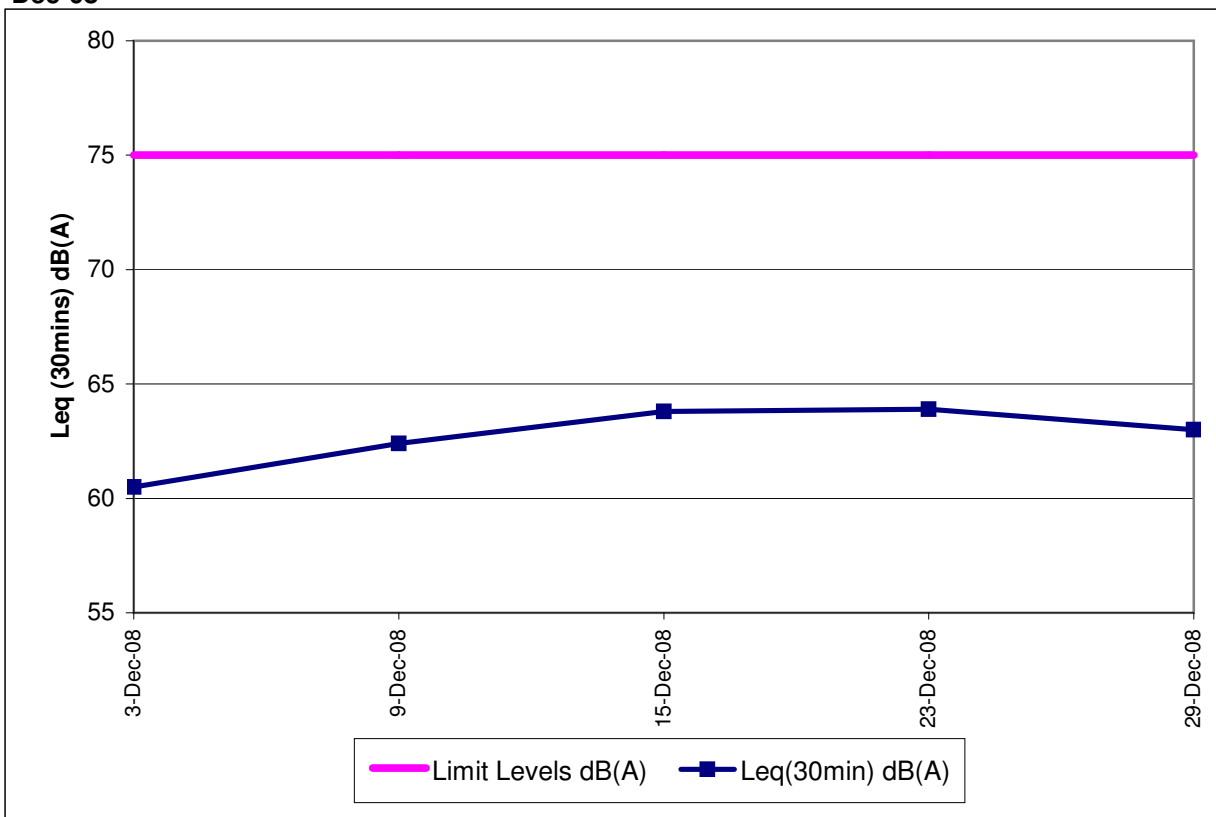
**Contract No. DC/2007/12 - Design and Construction of Tsuen Wan Drainage Tunnel
 Noise Monitoring Results at Hong Hoi Chee Hong Temple (NSR 3)
 Dec-08**



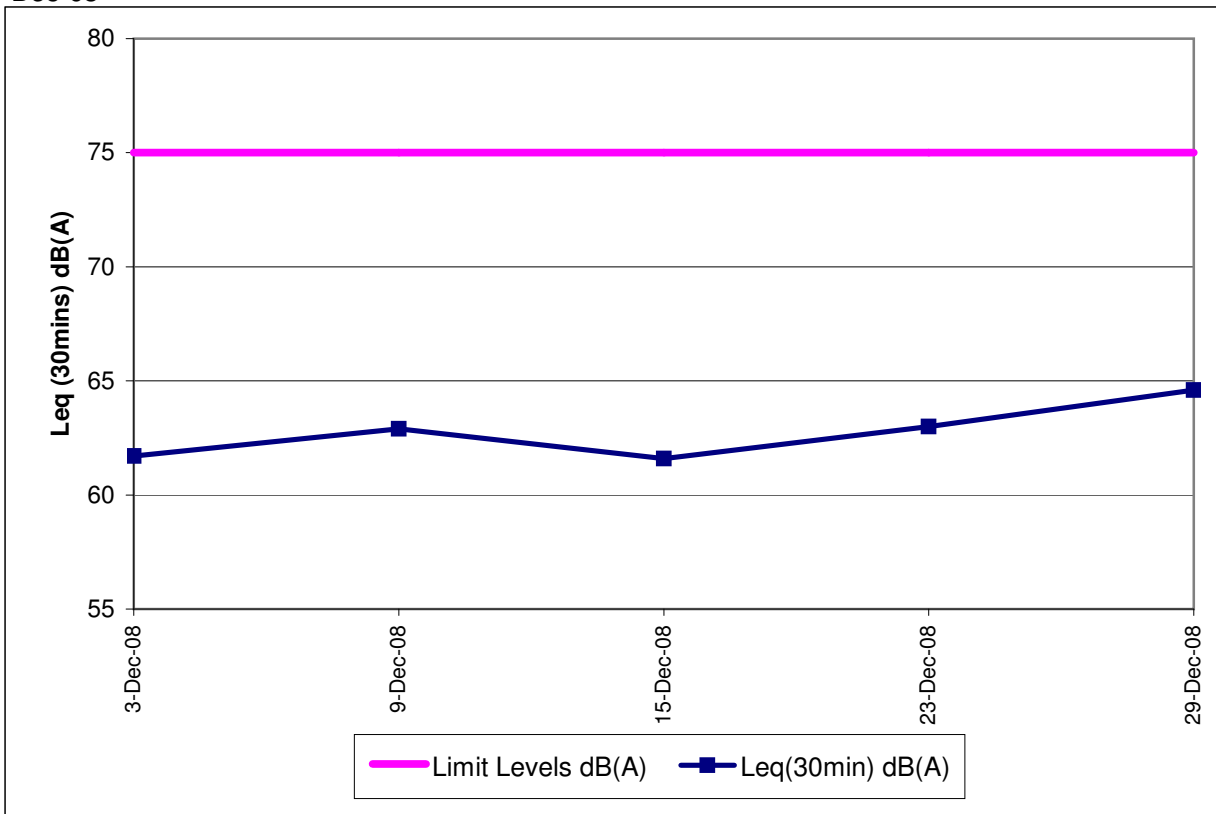
**Contract No. DC/2007/12 - Design and Construction of Tsuen Wan Drainage Tunnel
Noise Monitoring Results at Squatters (NSR 6)
Dec-08**



**Contract No. DC/2007/12 - Design and Construction of Tsuen Wan Drainage Tunnel
Noise Monitoring Results at Long Beach Gardens (NSR 8)
Dec-08**



**Contract No. DC/2007/12 - Design and Construction of Tsuen Wan Drainage Tunnel
Noise Monitoring Results at Greenview Terrace (NSR 9)
Dec-08**

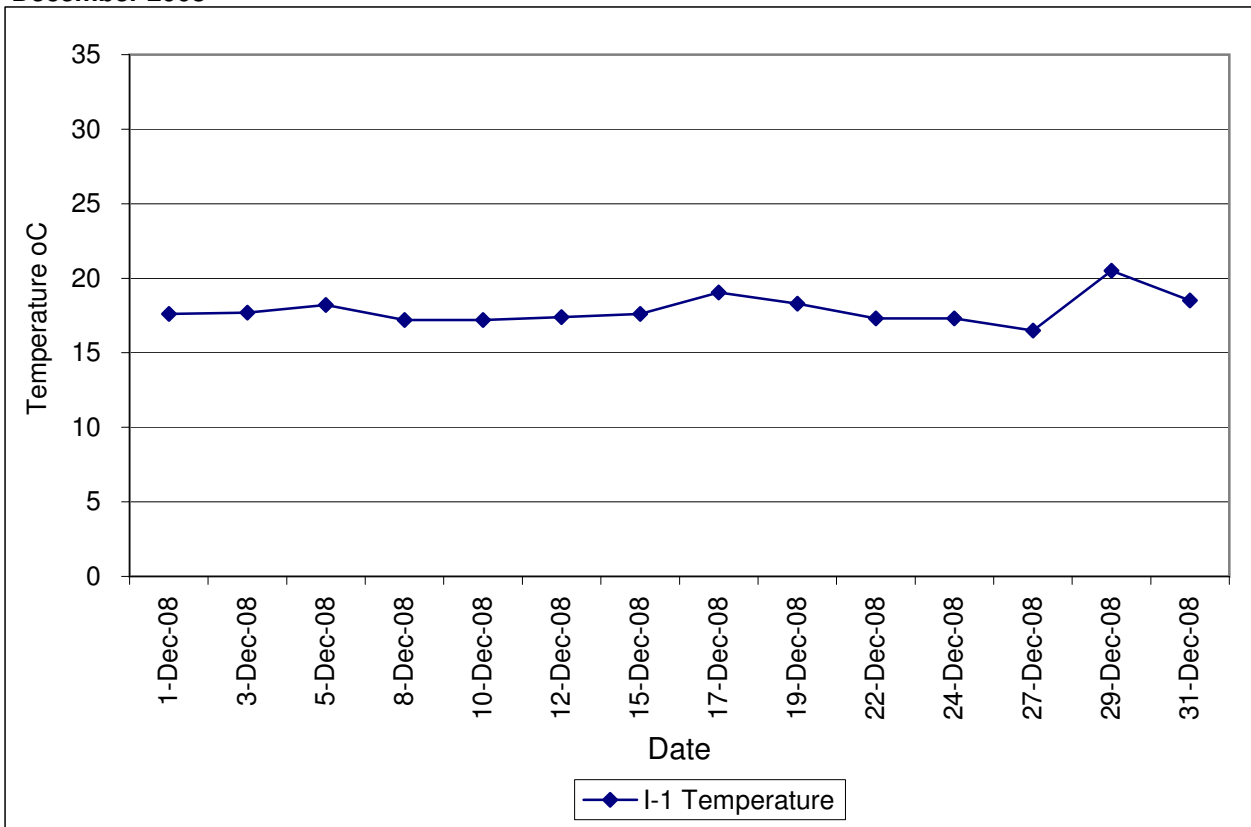


Contract No. DC/2007/12 - Design and Construction of Tsuen Wan Drainage Tunnel

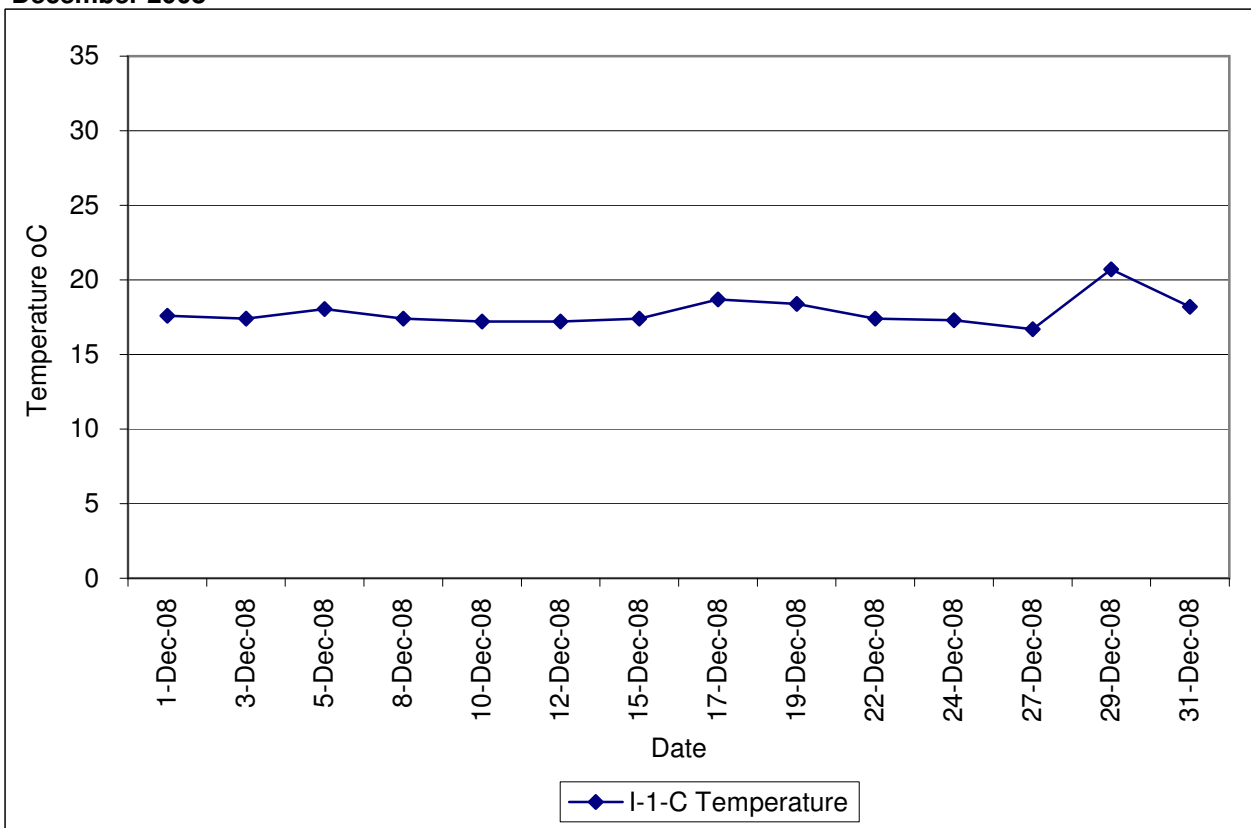
Water Quality Impact Monitoring Results

Monitoring Locations	Date	Start Time	Weather	Water Depth(m)	Temp			DO(mg/L)			Action/Limit Level of DO(mg/L)	pH			Turbidity(NTU)			Action/Limit Level of Tby	SS (mg/L)			Action/Limit Level of SS(mg/L)	Remarks:	Action to be taken
					1	2	Avg	1	2	Avg		1	2	Avg	1	2	Avg		1	2	Avg			
Sik Sik Yuen Ho Fung College I-1	1-Dec-08	9:35	Sunny	<1	17.60	17.60	17.60	4.80	4.78	4.79	7.59	7.59	7.59	3.37	3.36	3.37	2.0	2.0	2.0	No piling operation	Nil			
	3-Dec-08	13:50	Fine	<1	17.70	17.70	17.70	4.62	4.67	4.65	8.22	8.22	8.22	5.32	5.36	5.34	8.9	8.1	8.5	No piling operation	Nil			
	5-Dec-08	9:55	Sunny	<1	18.20	18.20	18.20	4.92	4.90	4.91	7.29	7.29	7.29	4.87	4.88	4.88	7.8	5.9	6.9	Piling working	Nil			
	8-Dec-08	9:50	Sunny	<1	17.20	17.20	17.20	4.82	4.80	4.81	7.77	7.78	7.78	3.35	3.33	3.34	4.6	4.9	4.8	Piling working	Nil			
	10-Dec-08	9:45	Sunny	<1	17.20	17.20	17.20	4.45	4.48	4.47	7.72	7.73	7.73	5.24	5.22	5.23	5.7	5.1	5.4	Piling working, crane operation	Nil			
	12-Dec-08	9:35	Fine	<1	17.40	17.40	17.40	4.72	4.74	4.73	7.73	7.73	7.73	4.27	4.32	4.30	3.8	3.6	3.7	Piling working	Nil			
	15-Dec-08	14:20	Fine	<1	17.60	17.60	17.60	4.87	4.89	4.88	8.00	8.00	8.00	4.27	4.25	4.26	2.0	2.0	2.0	Piling working, crane operation	Nil			
	17-Dec-08	11:50	Sunny	<1	19.10	19.00	19.05	4.72	4.75	4.74	8.00	8.00	8.00	4.15	4.12	4.14	3.8	3.8	3.8	Piling working	Nil			
	19-Dec-08	9:45	Sunny	<1	18.30	18.30	18.30	4.80	4.78	4.79	8.11	8.11	8.11	5.11	5.14	5.13	11.2	11.0	11.1	Piling working	Nil			
	22-Dec-08	9:48	Sunny	<1	17.30	17.30	17.30	4.73	4.71	4.72	8.45	8.44	8.45	3.89	4.40	4.15	2.0	2.0	2.0	Piling working	Nil			
	24-Dec-08	9:42	Sunny	<1	17.30	17.30	17.30	5.32	5.34	5.33	7.73	7.73	7.73	3.52	3.55	3.54	2.0	2.0	2.0	Piling working, breaking by backhoe	Nil			
	27-Dec-08	9:55	Sunny	<1	16.50	16.50	16.50	4.62	4.64	4.63	7.77	7.77	7.77	5.20	5.19	5.20	2.8	2.9	2.9	Piling working, excavating by backhoe	Nil			
	29-Dec-08	13:59	Sunny	<1	20.50	20.50	20.50	4.93	4.89	4.91	7.56	7.55	7.56	6.32	6.37	6.35	7.6	7.4	7.5	Piling working, crane operation	Nil			
	31-Dec-08	9:35	Sunny	<1	18.50	18.50	18.50	4.68	4.70	4.69	7.70	7.70	7.70	4.37	4.41	4.39	2.0	2.0	2.0	Piling working	Nil			
	Sik Sik Yuen Ho Fung College I-1-C	1-Dec-08	9:15	Sunny	<1	17.60	17.60	17.60	4.83	4.81	4.82	8.36	8.37	8.37	3.42	3.44	3.43	2.0	2.0	2.0	Nil	Nil		
		3-Dec-08	13:35	Fine	<1	17.40	17.40	17.40	4.41	4.44	4.43	8.21	8.21	8.21	5.57	5.54	5.56	8.1	7.5	7.8	Nil	Nil		
5-Dec-08		9:30	Sunny	<1	18.10	18.00	18.05	4.88	4.84	4.86	7.62	7.62	7.62	4.99	5.11	5.05	5.8	5.6	5.7	Nil	Nil			
8-Dec-08		9:35	Sunny	<1	17.40	17.40	17.40	5.00	4.95	4.98	7.78	7.78	7.78	3.45	3.46	3.46	4.1	3.6	3.9	Nil	Nil			
10-Dec-08		9:22	Sunny	<1	17.20	17.20	17.20	4.83	4.82	4.83	7.72	7.79	7.76	5.35	5.34	5.35	5.1	4.7	4.9	Nil	Nil			
12-Dec-08		9:23	Fine	<1	17.20	17.20	17.20	4.66	4.67	4.67	7.73	7.73	7.73	4.66	4.67	4.67	3.9	4.3	4.1	Nil	Nil			
15-Dec-08		13:05	Fine	<1	17.40	17.40	17.40	4.95	4.89	4.92	8.00	8.02	8.01	4.35	4.38	4.37	2.0	2.0	2.0	Nil	Nil			
17-Dec-08		11:34	Sunny	<1	18.70	18.70	18.70	4.53	4.48	4.51	8.14	8.16	8.15	4.06	4.23	4.15	4.1	4.5	4.3	Nil	Nil			
19-Dec-08		9:25	Sunny	<1	18.40	18.40	18.40	4.77	4.72	4.75	8.05	8.06	8.06	5.21	5.23	5.22	10.3	11.6	11.0	Nil	Nil			
22-Dec-08		9:20	Sunny	<1	17.40	17.40	17.40	4.78	4.76	4.77	8.32	8.32	8.32	4.35	4.42	4.39	2.0	2.0	2.0	Nil	Nil			
24-Dec-08		9:15	Sunny	<1	17.30	17.30	17.30	5.11	5.13	5.12	7.77	7.77	7.77	5.11	5.13	5.12	2.0	2.0	2.0	Nil	Nil			
27-Dec-08		9:15	Sunny	<1	16.70	16.70	16.70	4.67	4.61	4.64	7.82	7.83	7.83	5.22	5.23	5.23	3.1	2.9	3.0	Nil	Nil			
29-Dec-08		13:45	Sunny	<1	20.70	20.70	20.70	4.94	4.88	4.91	7.77	7.76	7.77	6.42	6.47	6.45	7.7	7.6	7.7	Nil	Nil			
31-Dec-08		9:11	Sunny	<1	18.20	18.20	18.20	4.62	4.60	4.61	7.71	7.71	7.71	4.42	4.53	4.48	2.0	2.0	2.0	Nil	Nil			
Hong Hoi Chee Hong Temple I-2		1-Dec-08	11:45	Sunny	<1	17.60	17.60	17.60	4.84	4.87	4.86	7.66	7.66	7.66	3.48	3.52	3.50	2.0	2.0	2.0	Piling working, crane operation	Nil		
		3-Dec-08	10:58	Fine	<1	16.20	16.20	16.20	4.63	4.65	4.64	8.42	8.42	8.42	3.47	3.50	3.49	2.0	2.0	2.0	No piling operation	Nil		
	5-Dec-08	10:50	Sunny	<1	18.00	18.00	18.00	4.61	4.63	4.62	7.72	7.72	7.72	4.75	4.72	4.74	2.0	2.0	2.0	Crane operation	Nil			
	8-Dec-08	10:48	Sunny	<1	17.50	17.50	17.50	4.75	4.72	4.74	7.74	7.74	7.74	3.22	3.20	3.21	2.0	2.0	2.0	Crane operation, excavation by backhoe	Nil			
	10-Dec-08	10:45	Sunny	<1	17.80	17.80	17.80	4.52	4.64	4.58	8.13	8.13	8.13	3.32	3.32	3.32	2.0	2.0	2.0	Crane operation, excavation by backhoe	Nil			
	12-Dec-08	10:33	Fine	<1	17.50	17.50	17.50	4.70	4.73	4.72	7.61	7.61	7.61	4.21	4.30	4.26	2.0	2.0	2.0	Crane operation	Nil			
	15-Dec-08	14:35	Fine	<1	17.50	17.50	17.50	4.78	4.81	4.80	8.12	8.11	8.12	4.21	4.22	4.22	2.0	2.0	2.0	Crane operation, excavation by backhoe	Nil			
	17-Dec-08	16:35	Sunny	<1	19.70	19.70	19.70	4.57	4.59	4.58	7.56	7.56	7.56	4.21	4.27	4.24	2.0	2.0	2.0	Crane operation, excavation by backhoe	Nil			
	19-Dec-08	10:49	Sunny	<1	17.50	17.50	17.50	4.44	4.49	4.47	7.66	7.66	7.66	3.18	3.20	3.19	2.0	2.0	2.0	Nil	Nil			
	22-Dec-08	10:40	Sunny	<1	17.80	17.80	17.80	4.68	4.57	4.63	7.59	7.57	7.58	3.72	3.77	3.75	2.0	2.0	2.0	Nil	Nil			
	24-Dec-08	11:00	Sunny	<1	17.00	17.00	17.00	4.83	4.86	4.85	7.52	7.50	7.51	4.25	4.30	4.28	2.0	2.0	2.0	Excavation by backhoe	Nil			
	27-Dec-08	10:48	Sunny	<1	16.30	16.30	16.30	4.87	4.82	4.85	7.98	7.98	7.98	4.28	4.35	4.32	2.3	2.3	2.3	Piling setting	Nil			
	29-Dec-08	10:25	Sunny	<1	21.30	21.30	21.30	3.72	3.61	3.67	7.80	7.80	7.80	4.22	4.20	4.21	6.4	6.4	6.4	Excavation by backhoe	Nil			
	31-Dec-08	10:50	Sunny	<1	18.20	18.00	18.10	4.78	4.79	4.79	7.73	7.73	7.73	4.30	4.32	4.31	2.0	2.0	2.0	Nil	Nil			
	Hong Hoi Chee Hong Temple I-2-C	1-Dec-08	11:20	Sunny	<1	17.70	17.70	17.70	4.76	4.78	4.77	7.63	7.64	7.64	3.56	3.61	3.59	2.0	2.0	2.0	Nil	Nil		
		3-Dec-08	10:35	Fine	<1	16.30	16.30	16.30	4.74	4.77	4.76	8.32	8.32	8.32	3.52	3.55	3.54	2.0	2.0	2.0	Nil	Nil		
5-Dec-08		10:36	Sunny	<1	18.20	18.20	18.20	4.65	4.71	4.68	7.71	7.71	7.71	4.87	4.82	4.85	2.0	2.0	2.0	Nil	Nil			
8-Dec-08		10:35	Sunny	<1	17.50	17.50	17.50	4.87	4.82	4.85	7.77	7.77	7.77	3.35	3.33	3.34	2.0	2.0	2.0	Nil	Nil			
10-Dec-08		10:30	Sunny	<1	17.80	17.80	17.80	4.82	4.80	4.81	8.14	8.13	8.14	3.41	3.38	3.40	2.0	2.0	2.0	Nil	Nil			
12-Dec-08		10:19	Fine	<1	17.50	17.50	17.50	4.72	4.74	4.73	7.63	7.63	7.63	4.33	4.37	4.35	2.0	2.0	2.0	Nil	Nil			
15-Dec-08		14:10	Fine	<1	17.80	17.80	17.80	4.74	4.75	4.75	8.08	8.02	8.05	4.52	4.33	4.43	2.0	2.0	2.0	Nil	Nil			
17-Dec-08		16:11	Sunny	<1	19.20	19.20	19.20	4.44	4.45	4.45	7.62	7.62	7.62	4.35	4.42	4.39	2.0	2.0	2.0	Nil	Nil			
19-Dec-08		10:30	Sunny	<1	17.20	17.30	17.25	4.42	4.44	4.43	7.63	7.65	7.64	3.21	3.22	3.22	2.0	2.0	2.0	Nil	Nil			
22-Dec-08		10:15	Sunny	<1	17.60	17.60	17.60	4.52	4.52	4.52	7.60	7.61	7.61	3.82	4.22	4.02	2.0	2.0	2.0	Nil	Nil			
24-Dec-08		10:30	Sunny	<1	17.10	17.10	17.10	4.66	4.68	4.67	7.53	7.53	7.53	4.32	4.35	4.34	2.0	2.0	2.0	Nil	Nil			
27-Dec-08		10:22	Sunny	<1	16.50	16.50	16.50	5.03	5.06	5.05	7.99	7.99	7.99	4.35	4.42	4.39	2.8	2.5	2.7	Nil	Nil			
29-Dec-08		10:25	Sunny	<1	21.10	21.10	21.10	4.00	4.03	4.02	7.83	7.83	7.83	4.32	4.44	4.38	6.4	6.0	6.2	Nil	Nil			
31-Dec-08		10:33	Sunny	<1	18.00	18.00	18.00	4.75	4.72	4.74	7.69	7.69	7.69	4.35	4.38	4.37	2.0	2.0	2.0	Nil	Nil			
Squatters																								

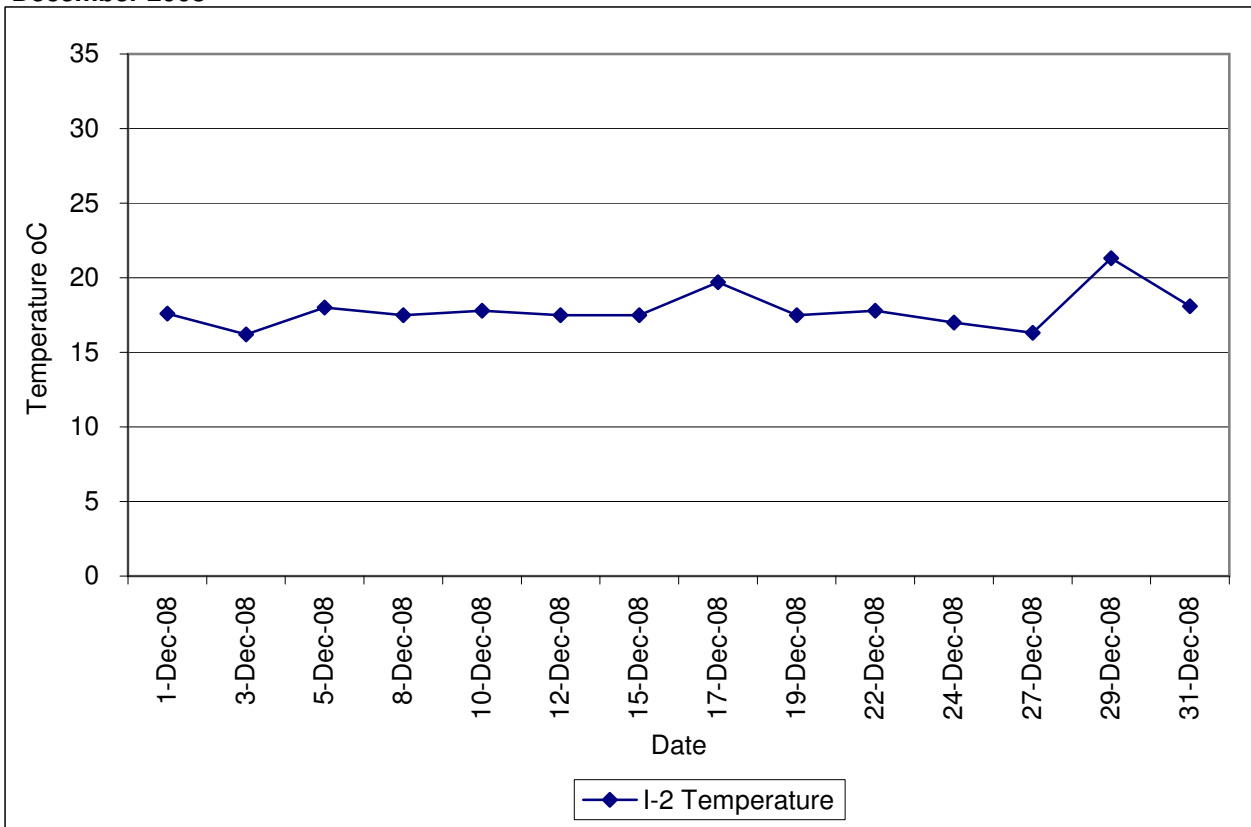
**Contract No. DC/2007/12 - Design and Construction of Tsuen Wan Drainage Tunnel
Water Quality Results at Sik Sik Yuen Ho Fung College (I-1)
December 2008**



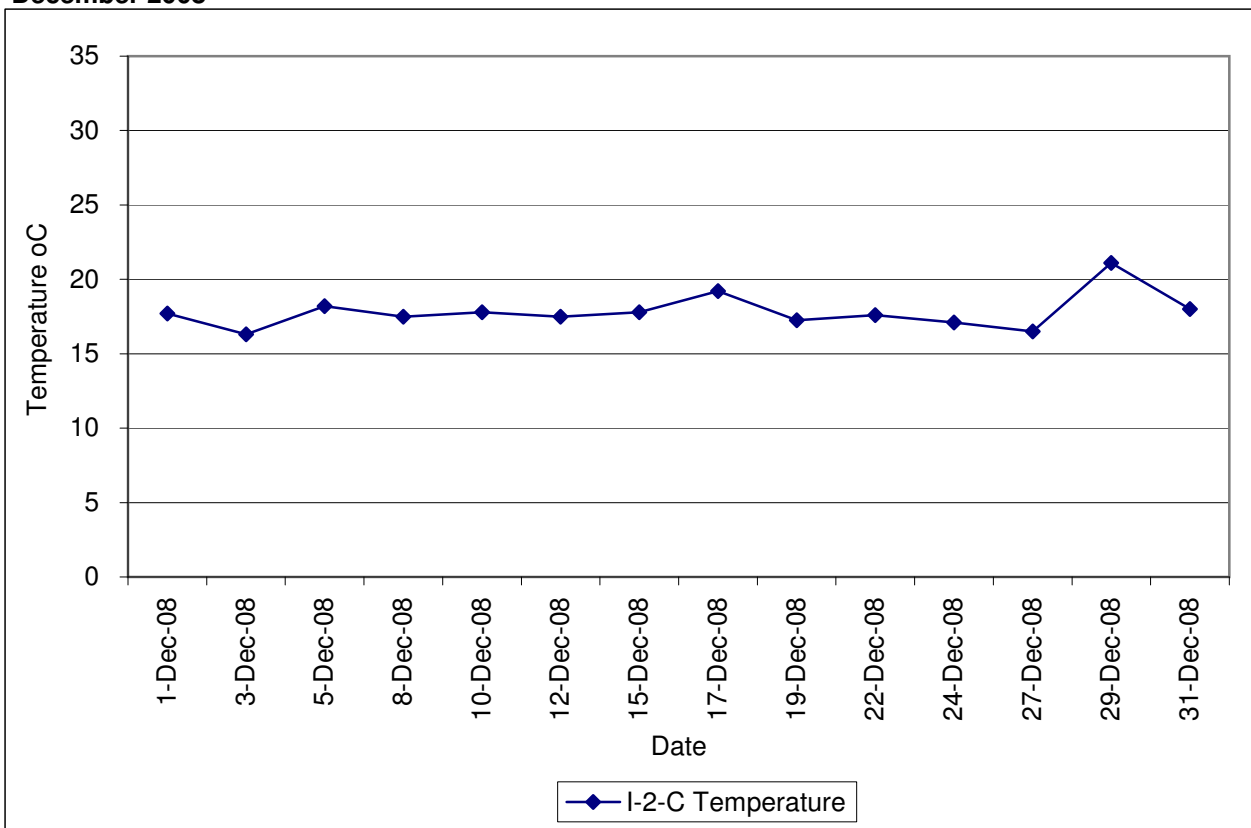
**Contract No. DC/2007/12 - Design and Construction of Tsuen Wan Drainage Tunnel
Water Quality Results at Sik Sik Yuen Ho Fung College (I-1-C)
December 2008**



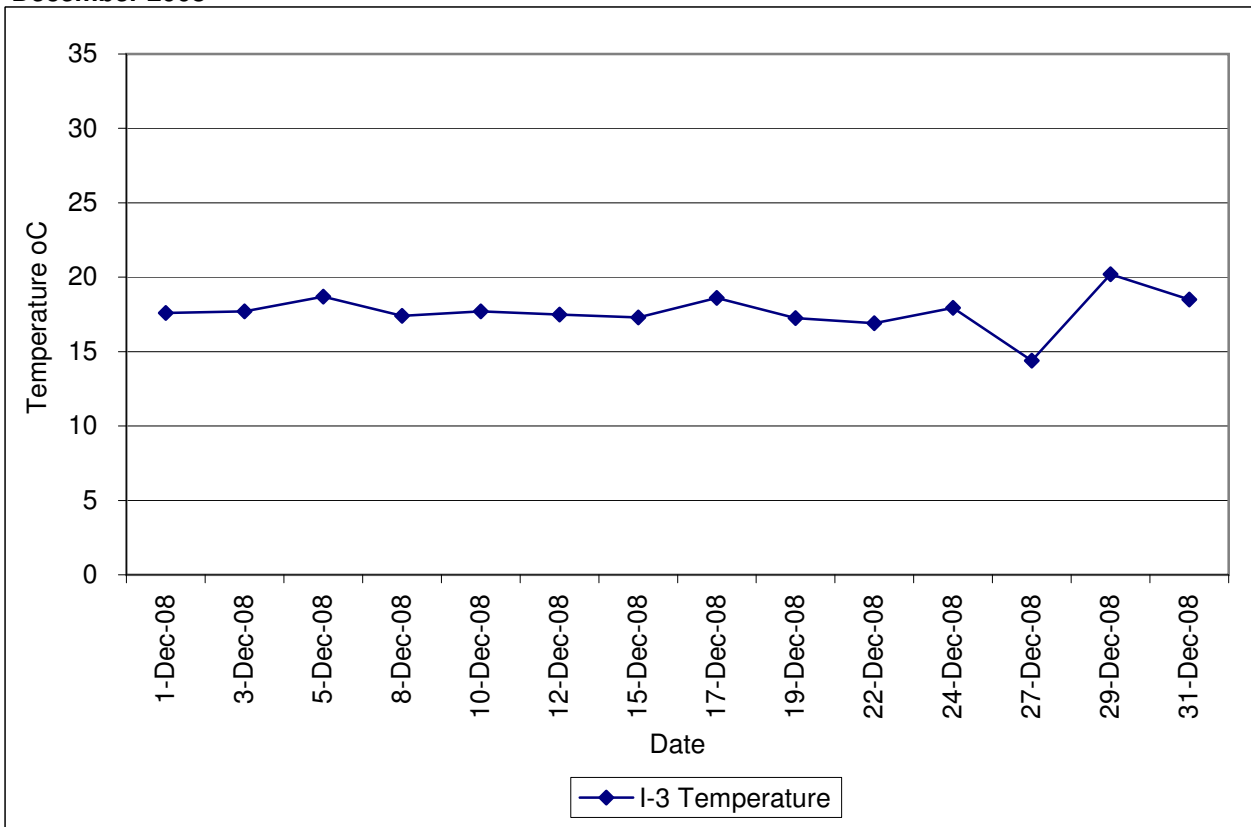
**Contract No. DC/2007/12 - Design and Construction of Tsuen Wan Drainage Tunnel
 Water Quality Results at Hong Hoi Chee Hong Temple (I-2)
 December 2008**



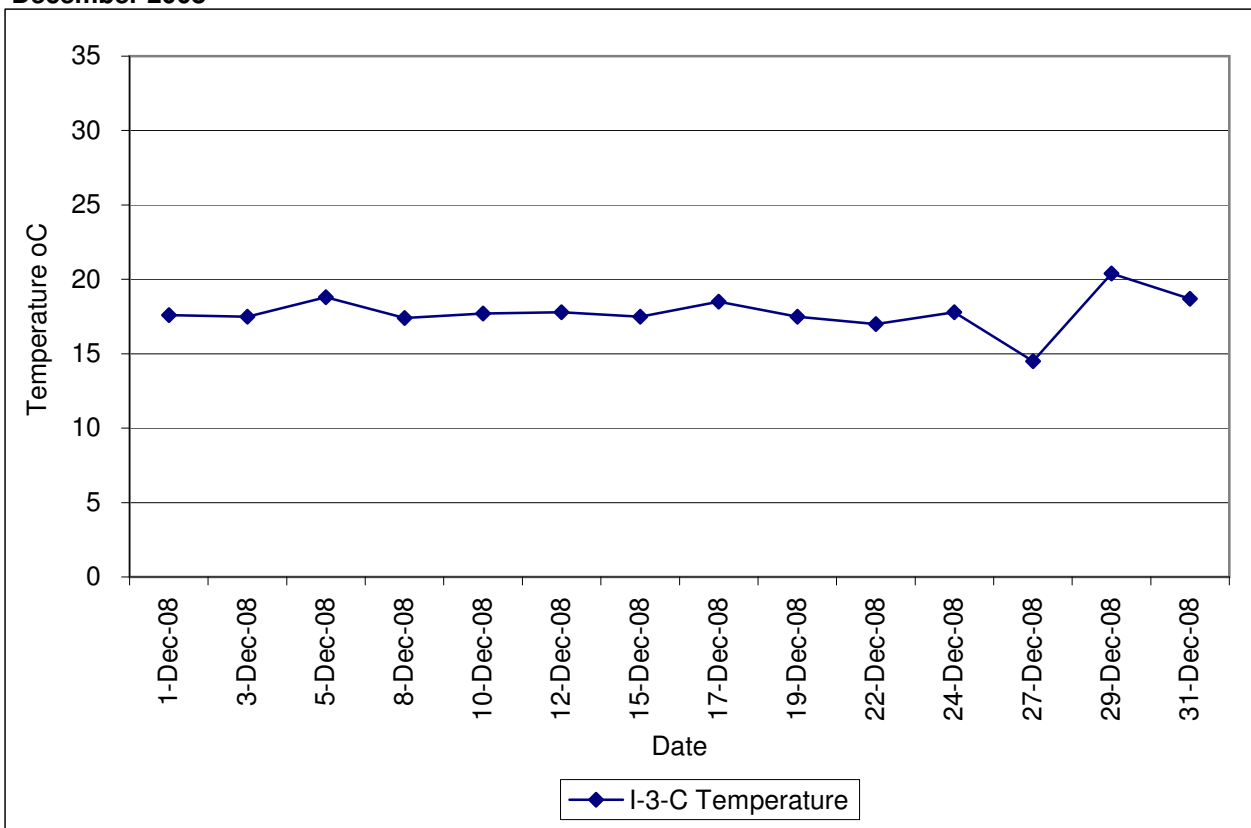
**Contract No. DC/2007/12 - Design and Construction of Tsuen Wan Drainage Tunnel
 Water Quality Results at Hong Hoi Chee Hong Temple (I-2-C)
 December 2008**



**Contract No. DC/2007/12 - Design and Construction of Tsuen Wan Drainage Tunnel
Water Quality Results at Squatters (I-3)
December 2008**

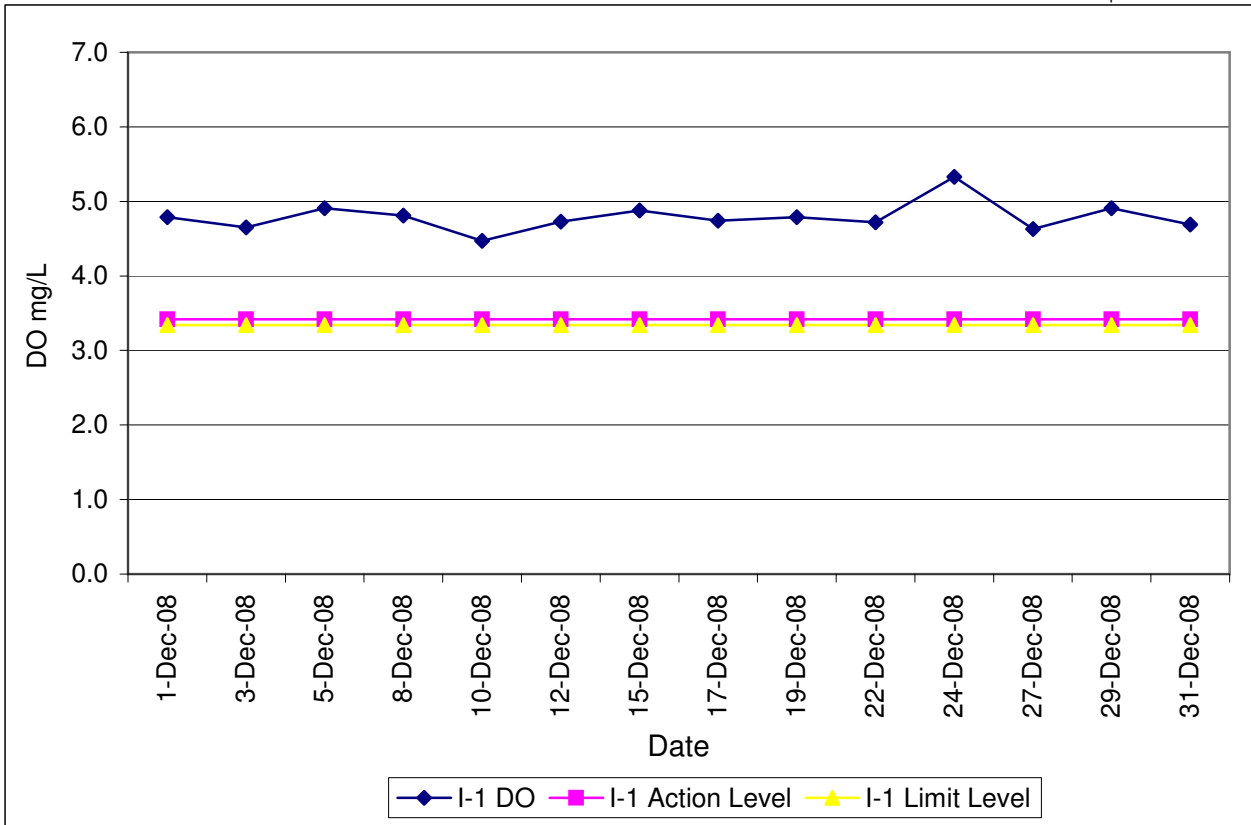


**Contract No. DC/2007/12 - Design and Construction of Tsuen Wan Drainage Tunnel
Water Quality Results at Squatters (I-3-C)
December 2008**

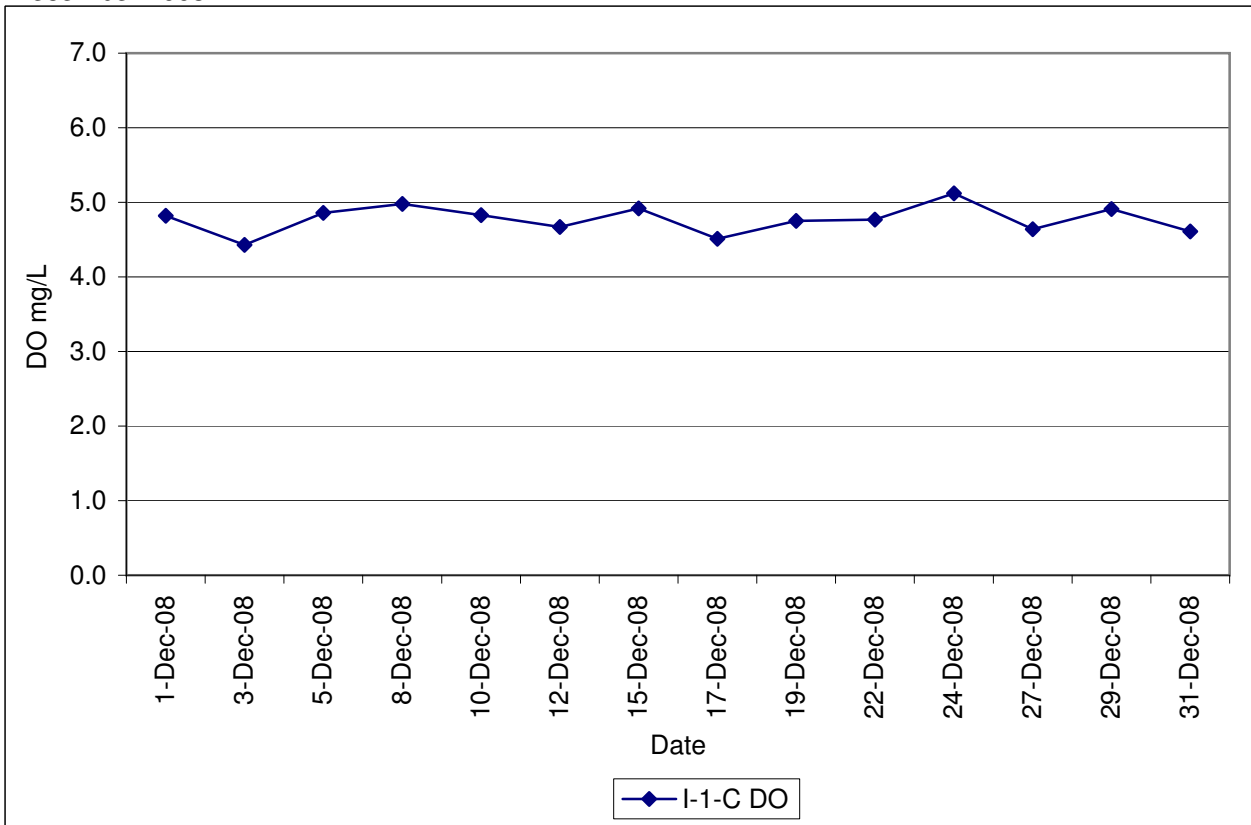


**Contract No. DC/2007/12 - Design and Construction of Tsuen Wan Drainage Tunnel
Water Quality Results at Sik Sik Yuen Ho Fung College (I-1)
December 2008**

Note: Exceedances of Action / Limit Levels occur when the levels of DO are below the respective limit levels.

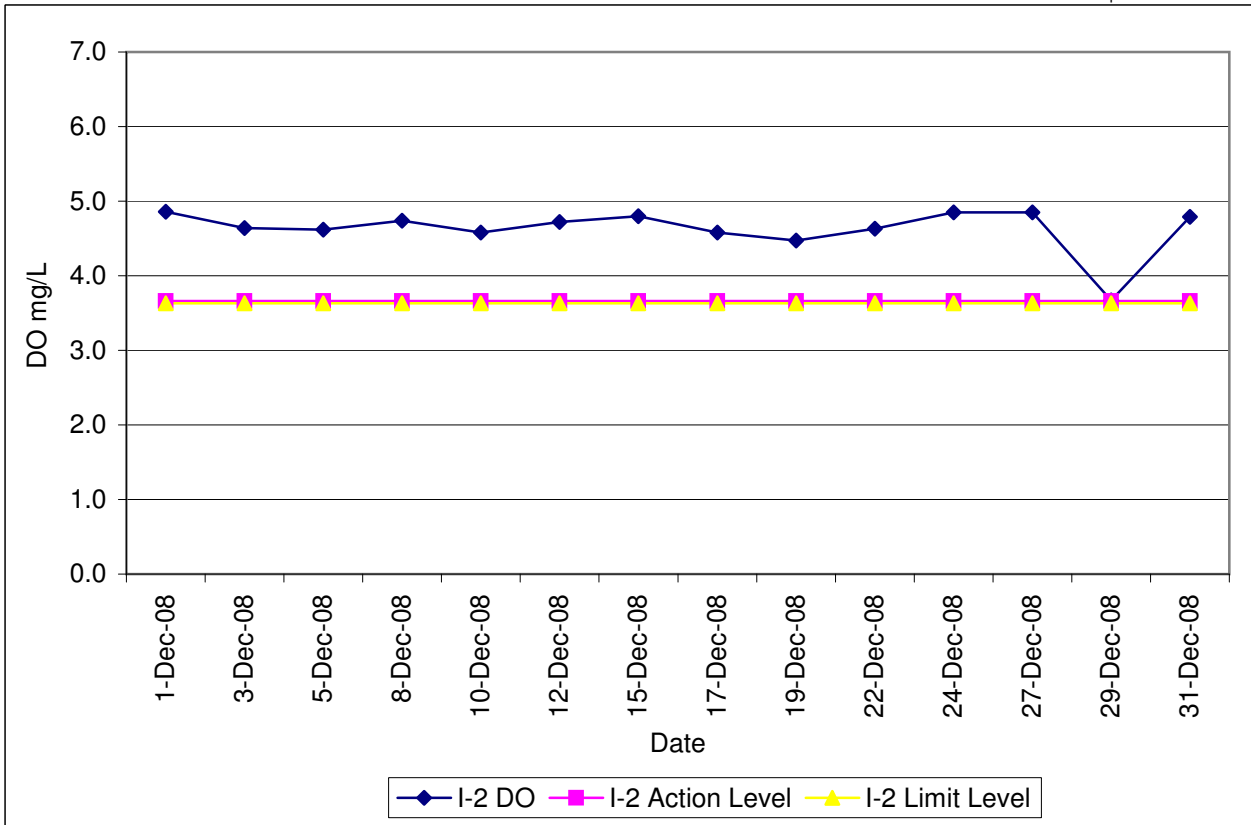


**Contract No. DC/2007/12 - Design and Construction of Tsuen Wan Drainage Tunnel
Water Quality Results at Sik Sik Yuen Ho Fung College (I-1-C)
December 2008**

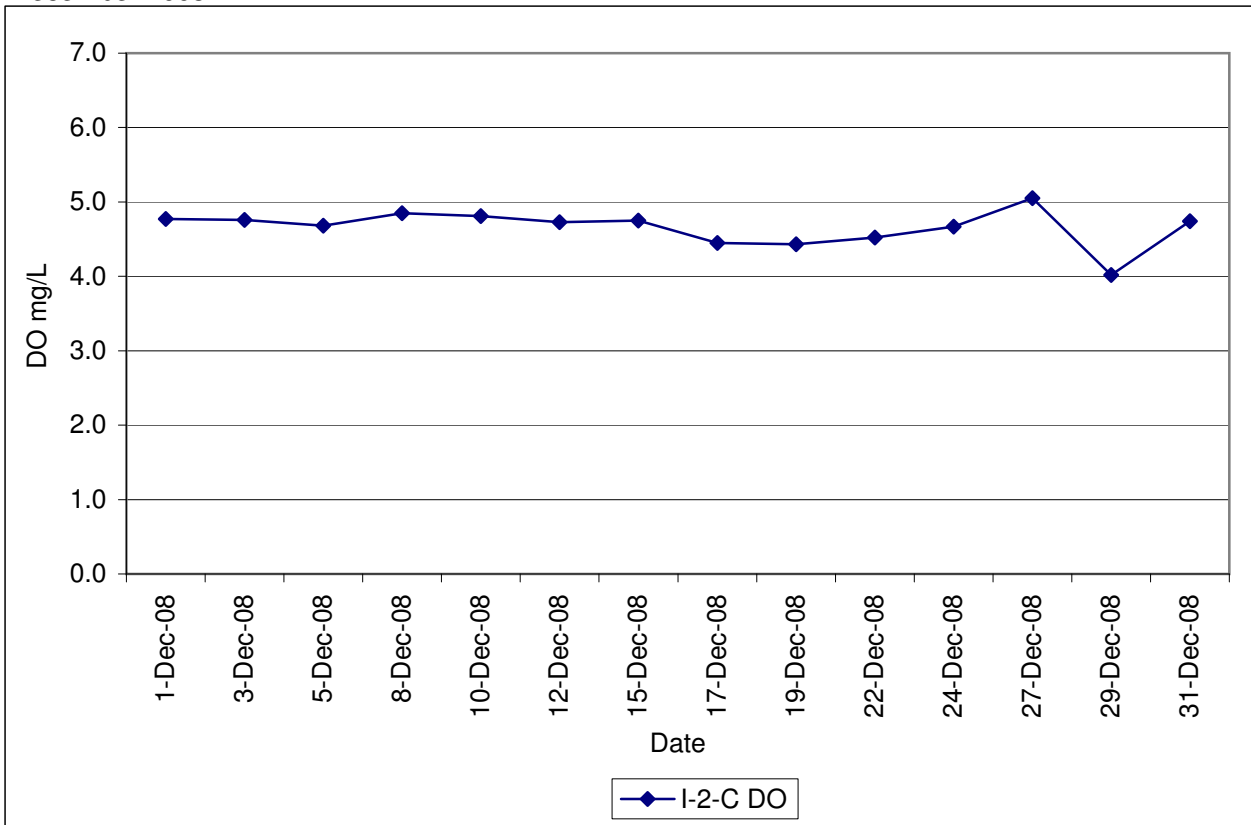


**Contract No. DC/2007/12 - Design and Construction of Tsuen Wan Drainage Tunnel
Water Quality Results at Hong Hoi Chee Hong Temple (I-2)
December 2008**

Note: Exceedances of Action / Limit Levels occur when the levels of DO are below the respective limit levels.

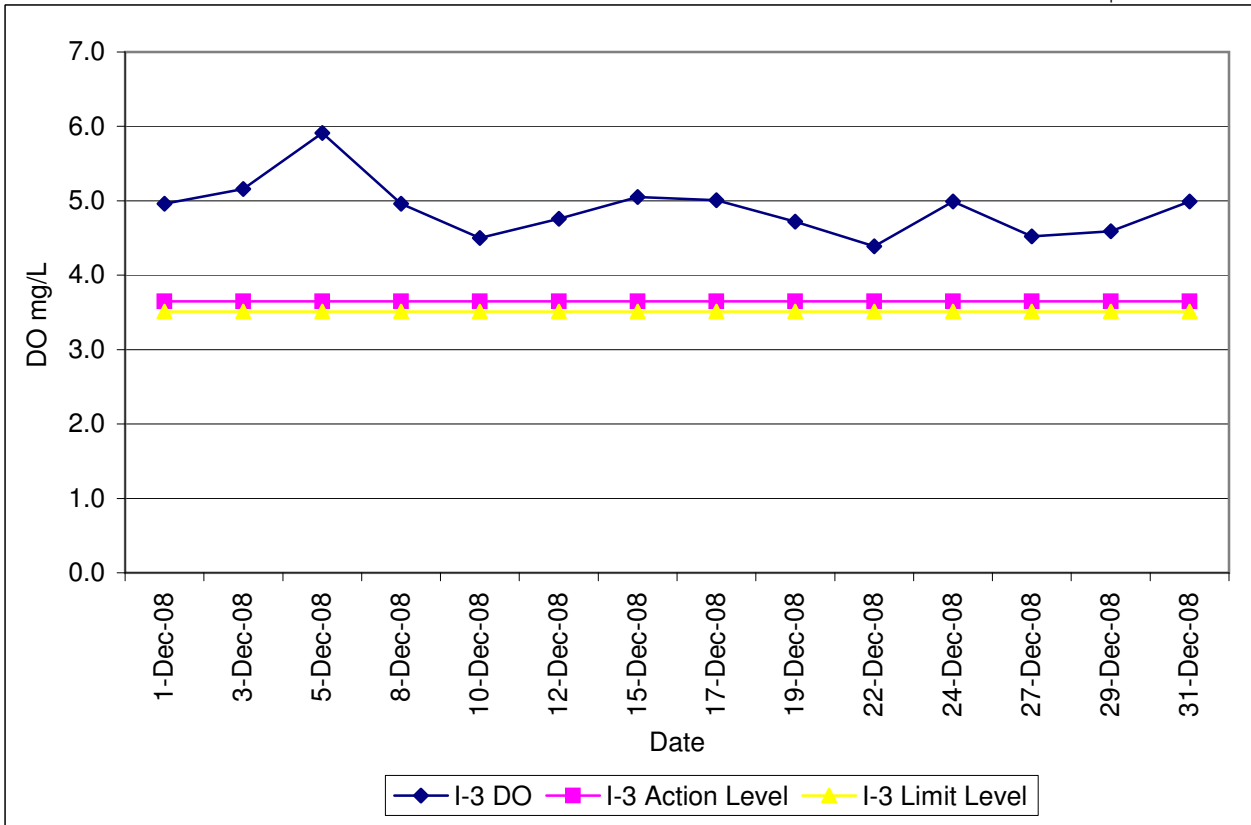


**Contract No. DC/2007/12 - Design and Construction of Tsuen Wan Drainage Tunnel
Water Quality Results at Hong Hoi Chee Hong Temple (I-2-C)
December 2008**

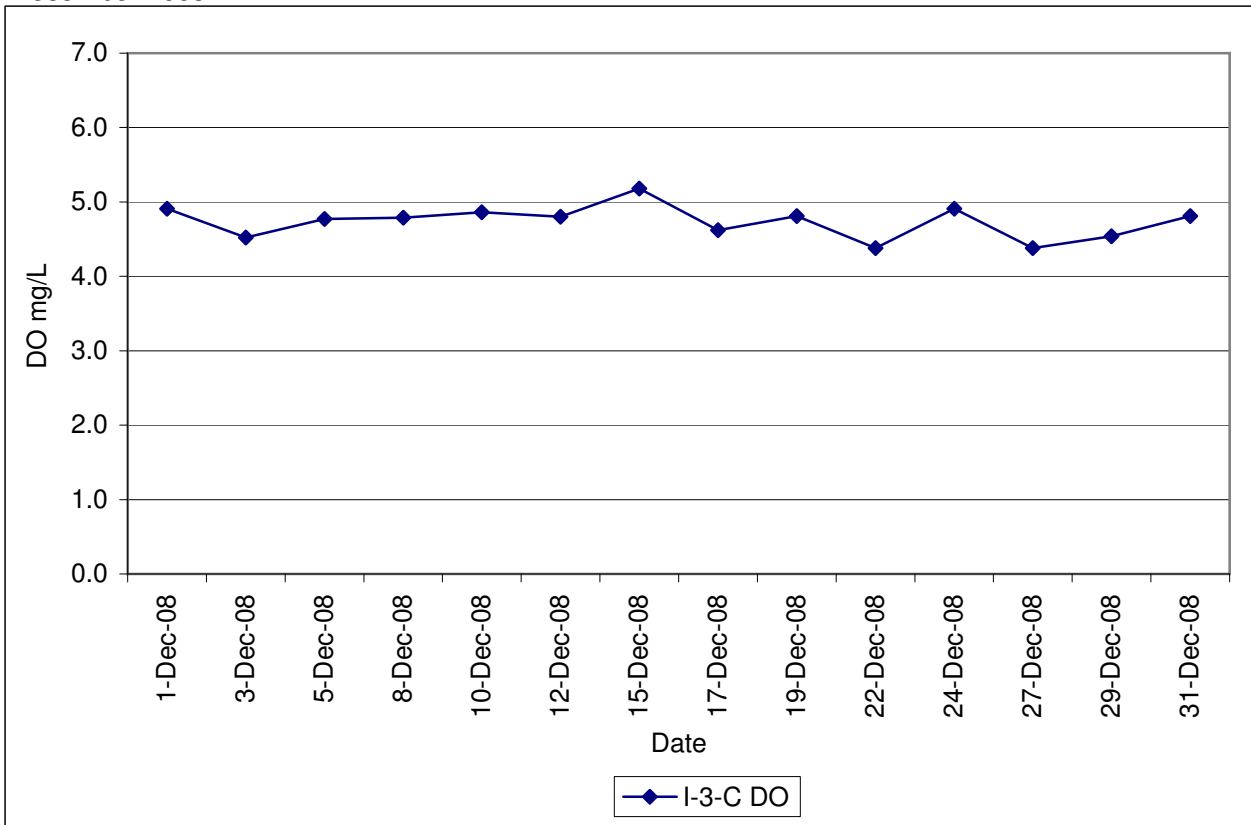


Contract No. DC/2007/12 - Design and Construction of Tsuen Wan Drainage Tunnel
Water Quality Results at Squatters (I-3)
December 2008

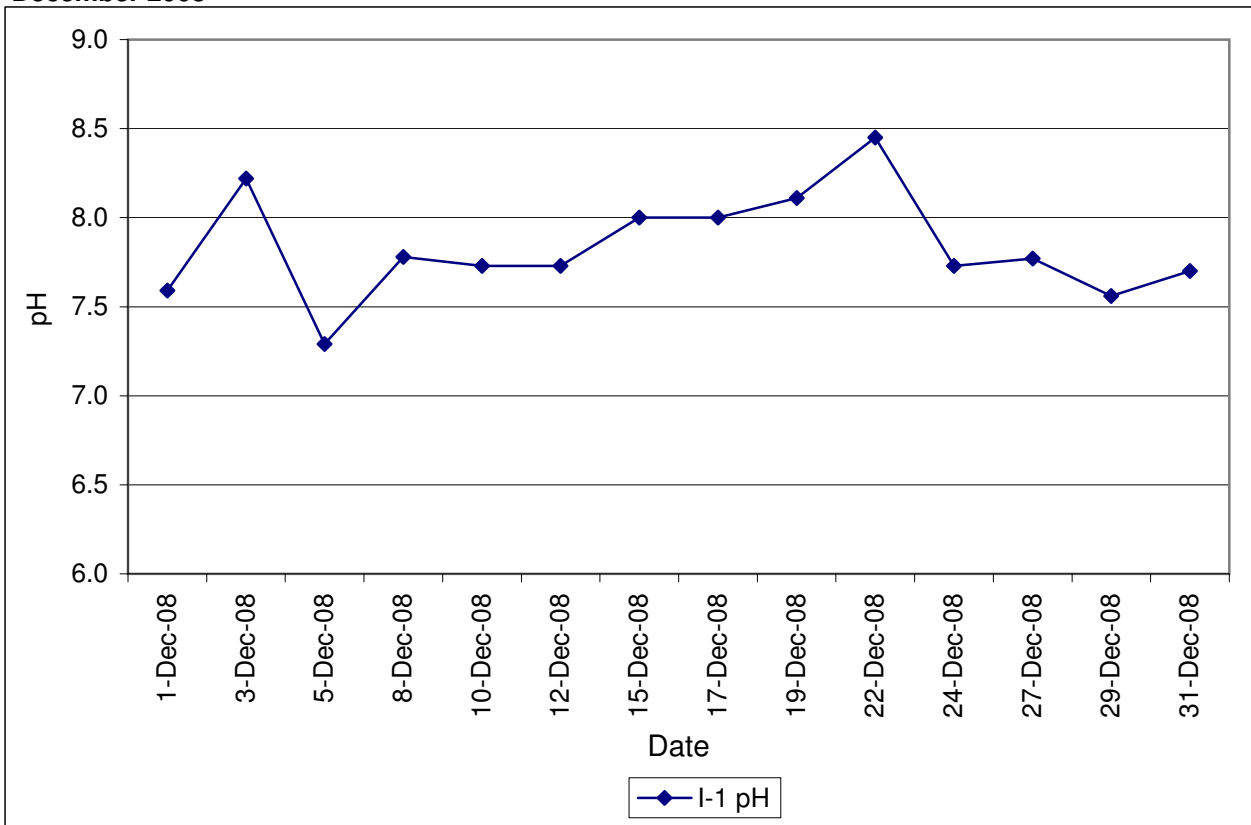
Note: Exceedances of Action / Limit Levels occur when the levels of DO are below the respective limit levels.



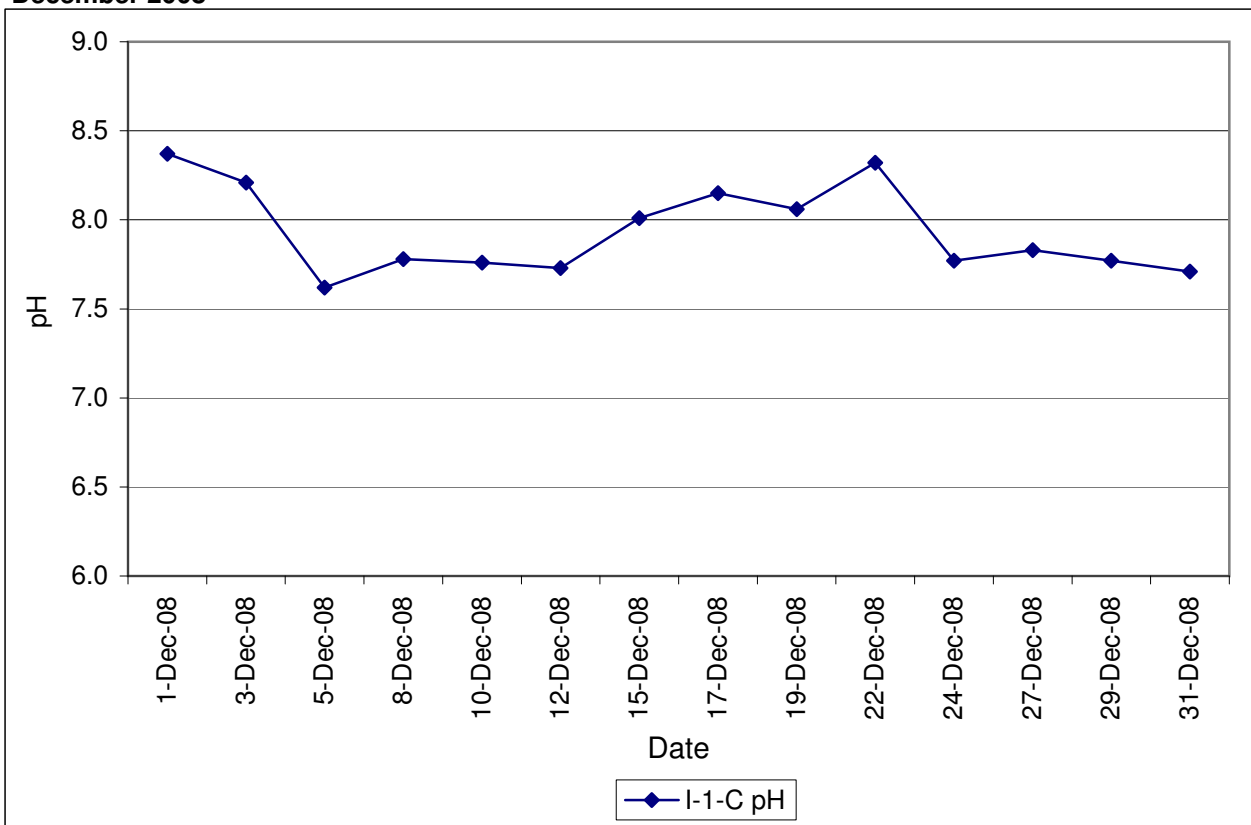
Contract No. DC/2007/12 - Design and Construction of Tsuen Wan Drainage Tunnel
Water Quality Results at Squatters (I-3-C)
December 2008



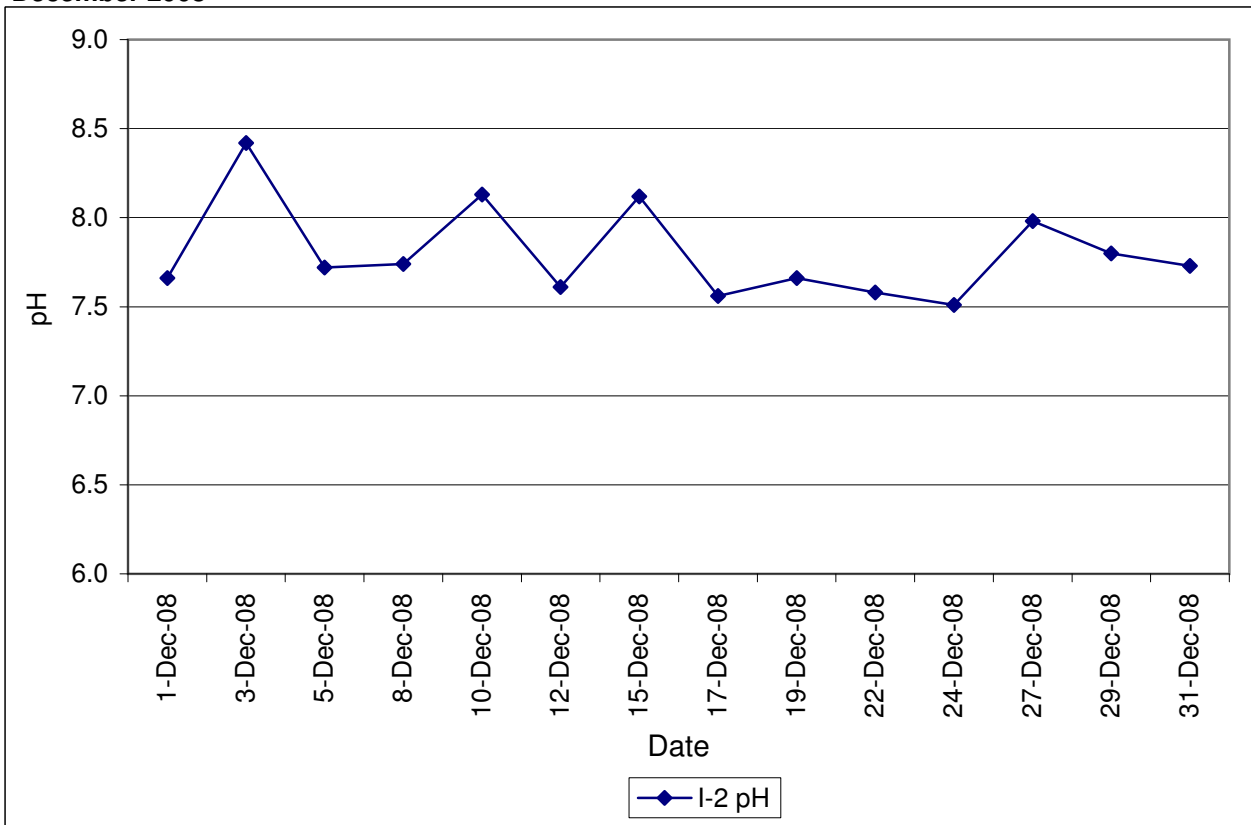
**Contract No. DC/2007/12 - Design and Construction of Tsuen Wan Drainage Tunnel
Water Quality Results at Sik Sik Yuen Ho Fung College (I-1)
December 2008**



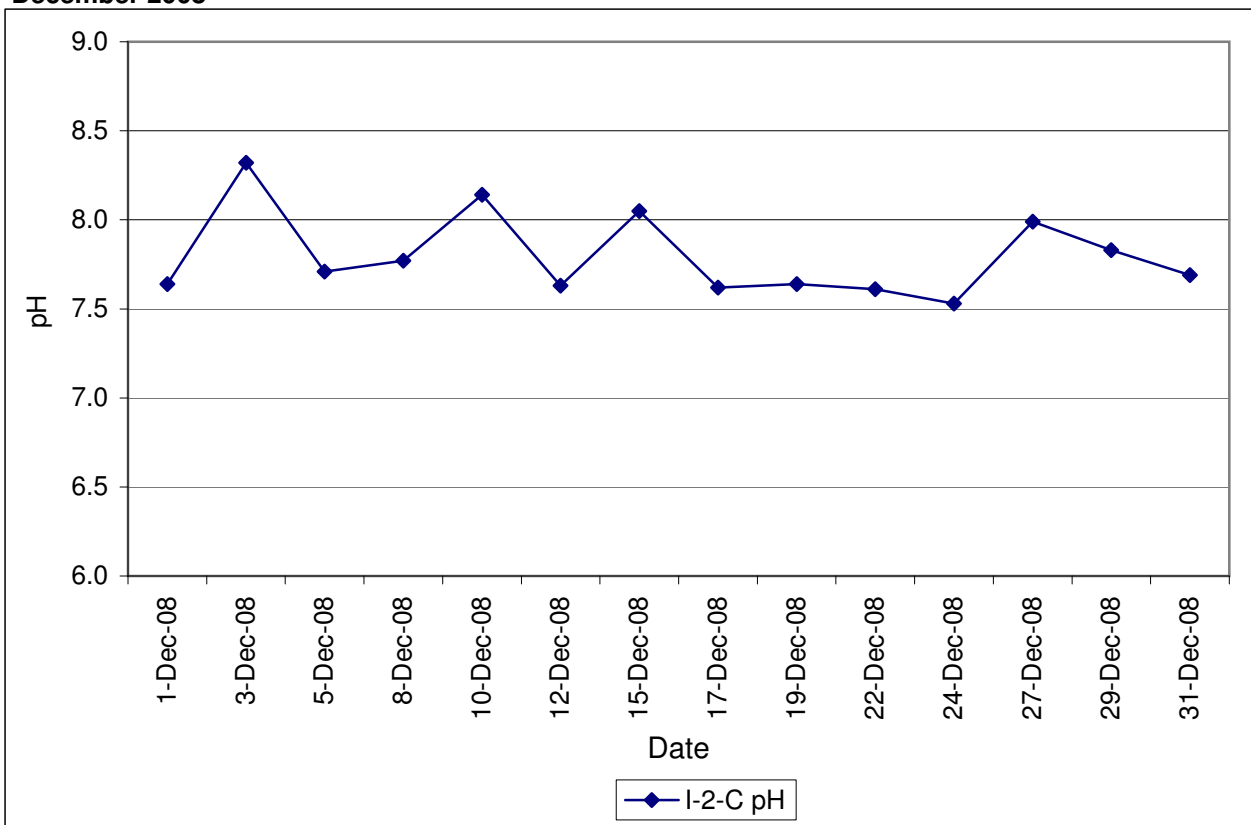
**Contract No. DC/2007/12 - Design and Construction of Tsuen Wan Drainage Tunnel
Water Quality Results at Sik Sik Yuen Ho Fung College (I-1-C)
December 2008**



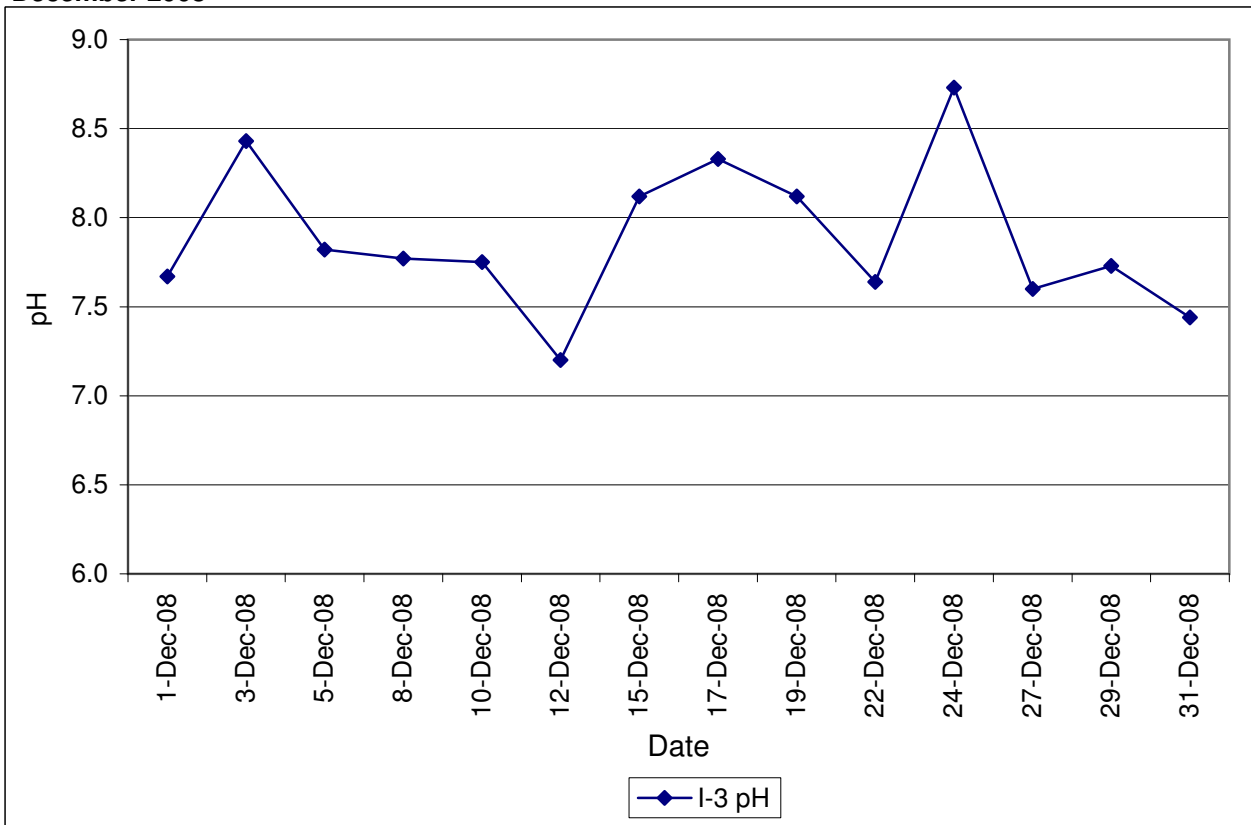
**Contract No. DC/2007/12 - Design and Construction of Tsuen Wan Drainage Tunnel
Water Quality Results at Hong Hoi Chee Hong Temple (I-2)
December 2008**



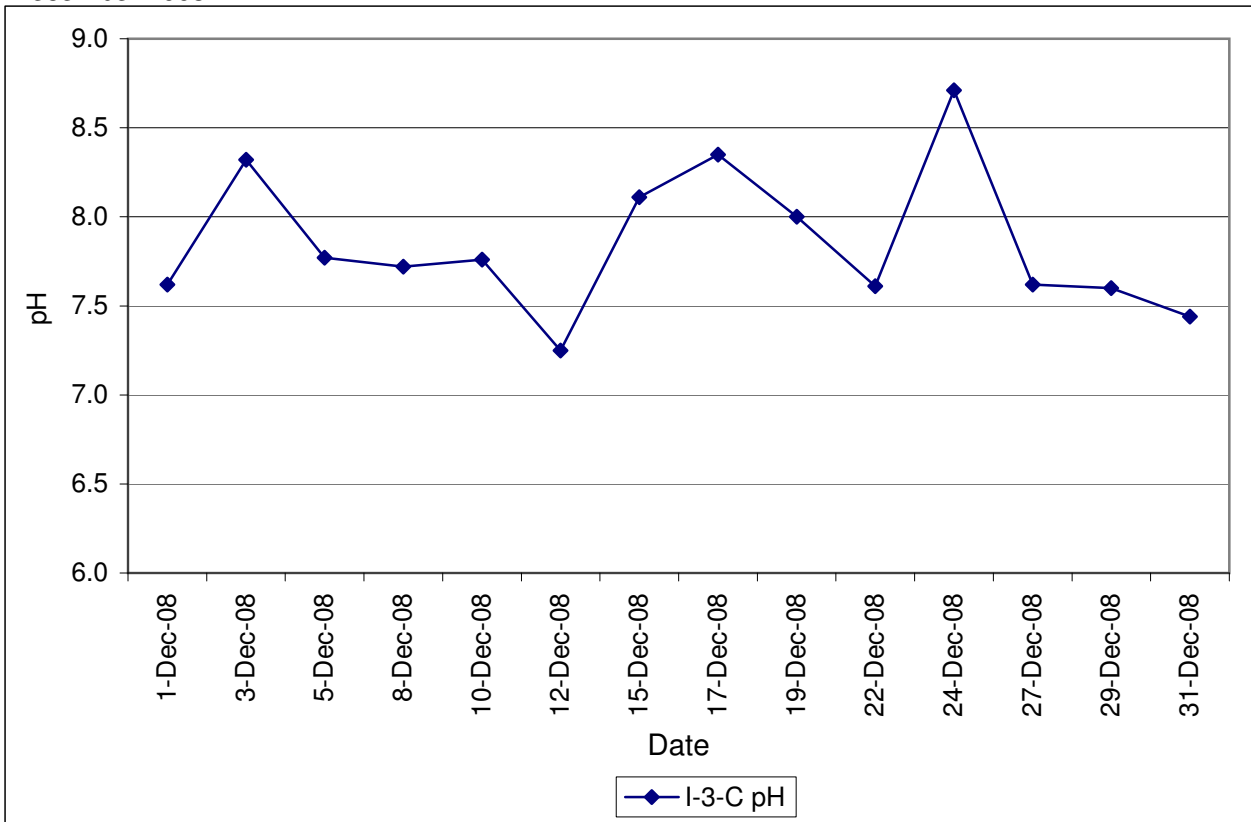
**Contract No. DC/2007/12 - Design and Construction of Tsuen Wan Drainage Tunnel
Water Quality Results at Hong Hoi Chee Hong Temple (I-2-C)
December 2008**



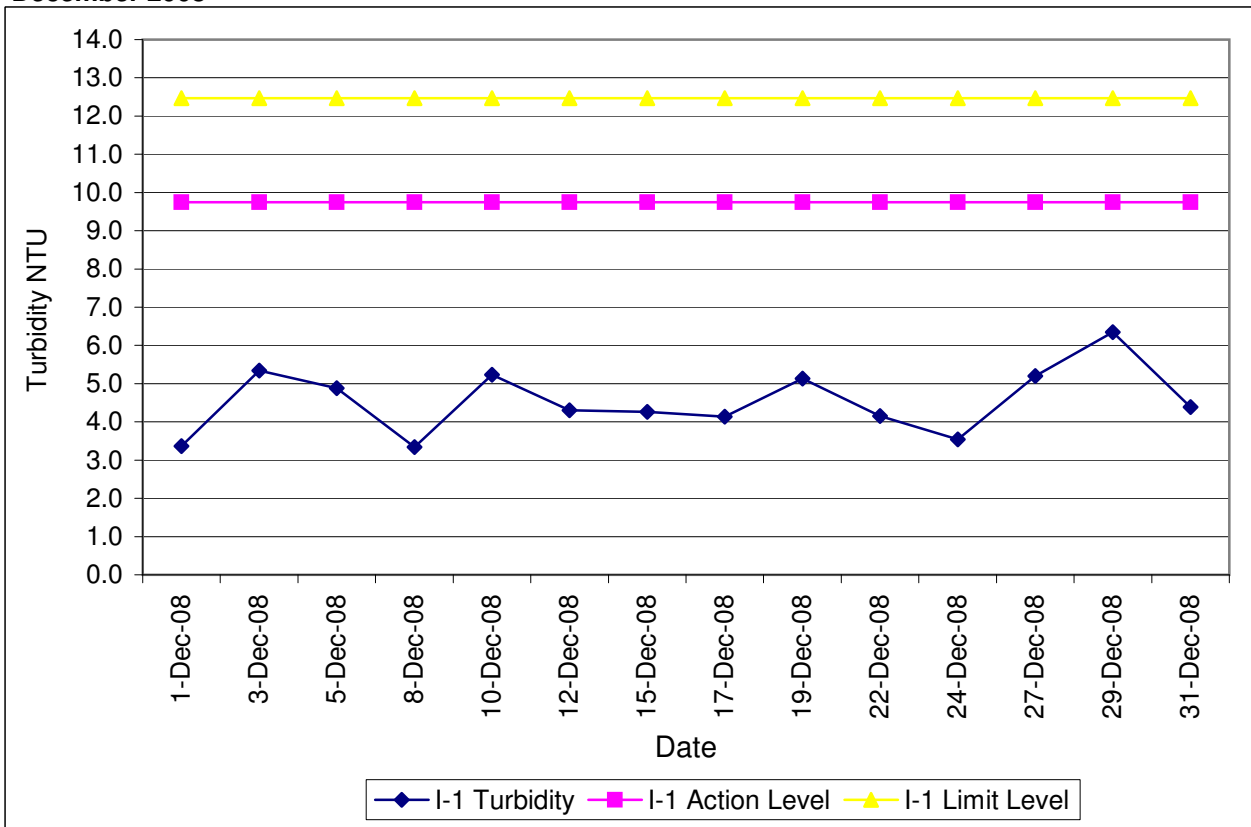
Contract No. DC/2007/12 - Design and Construction of Tsuen Wan Drainage Tunnel
Water Quality Results at Squatters (I-3)
December 2008



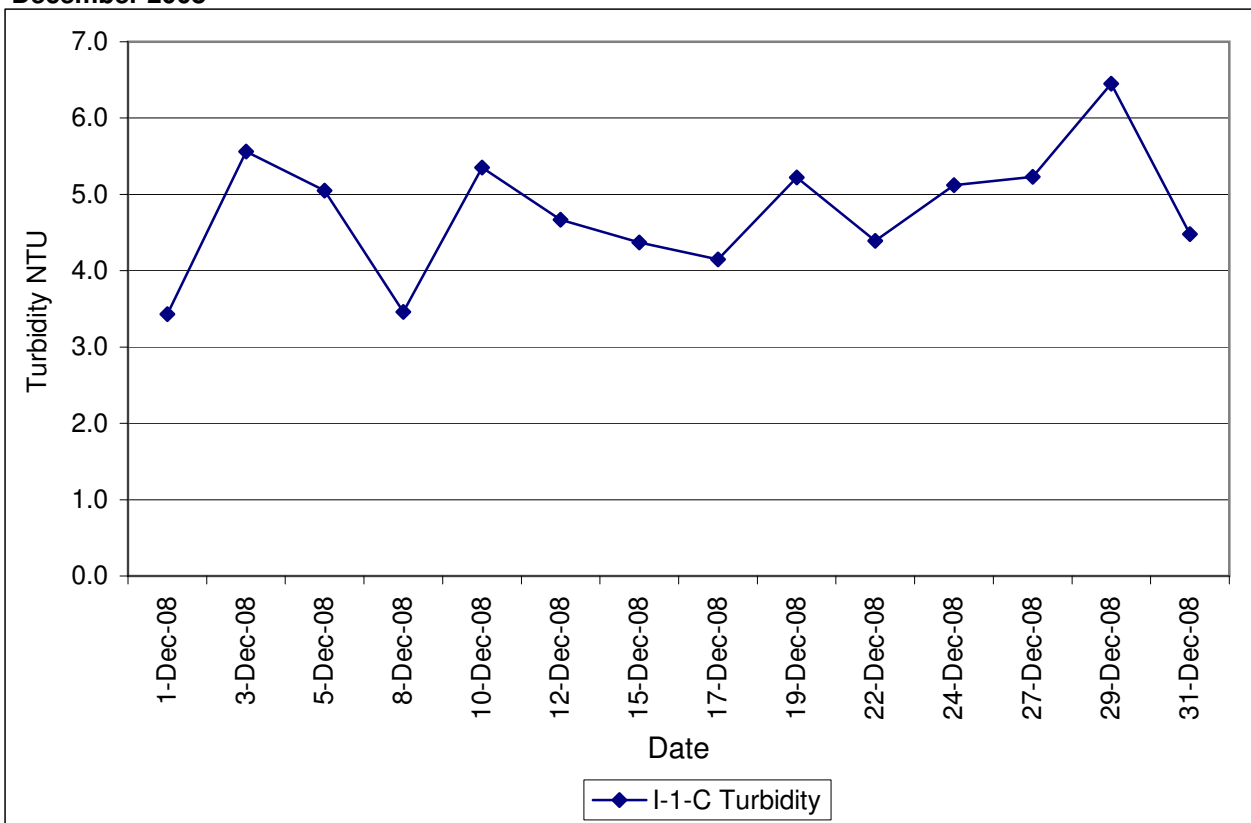
Contract No. DC/2007/12 - Design and Construction of Tsuen Wan Drainage Tunnel
Water Quality Results at Squatters (I-3-C)
December 2008



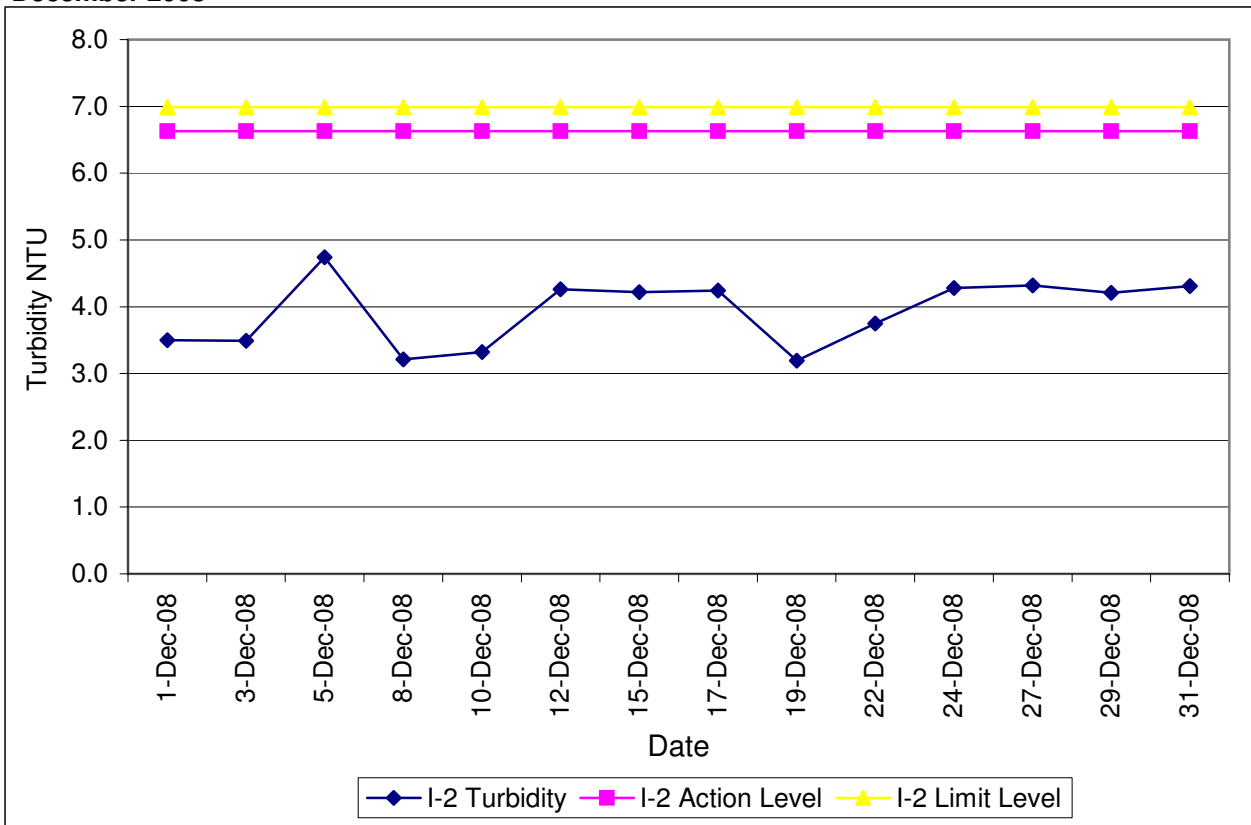
**Contract No. DC/2007/12 - Design and Construction of Tsuen Wan Drainage Tunnel
Water Quality Results at Sik Sik Yuen Ho Fung College (I-1)
December 2008**



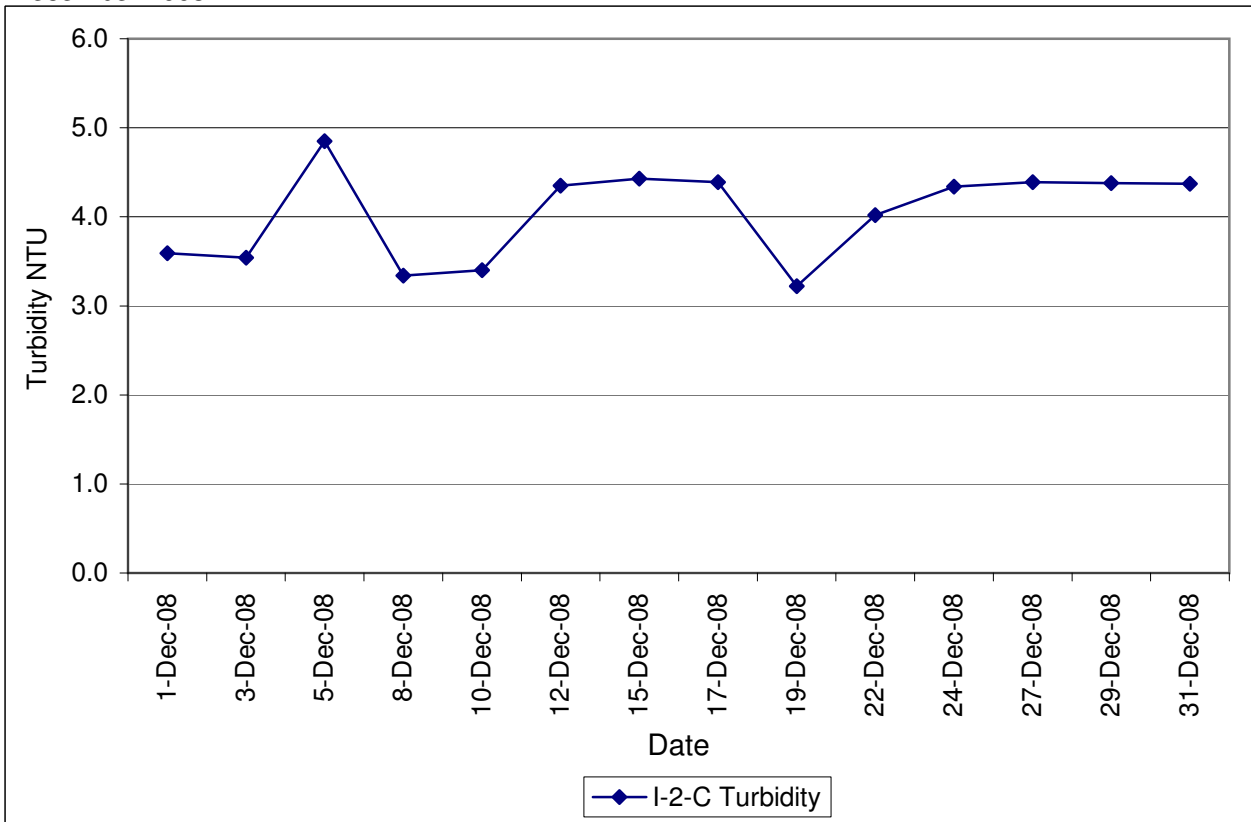
**Contract No. DC/2007/12 - Design and Construction of Tsuen Wan Drainage Tunnel
Water Quality Results at Sik Sik Yuen Ho Fung College (I-1-C)
December 2008**



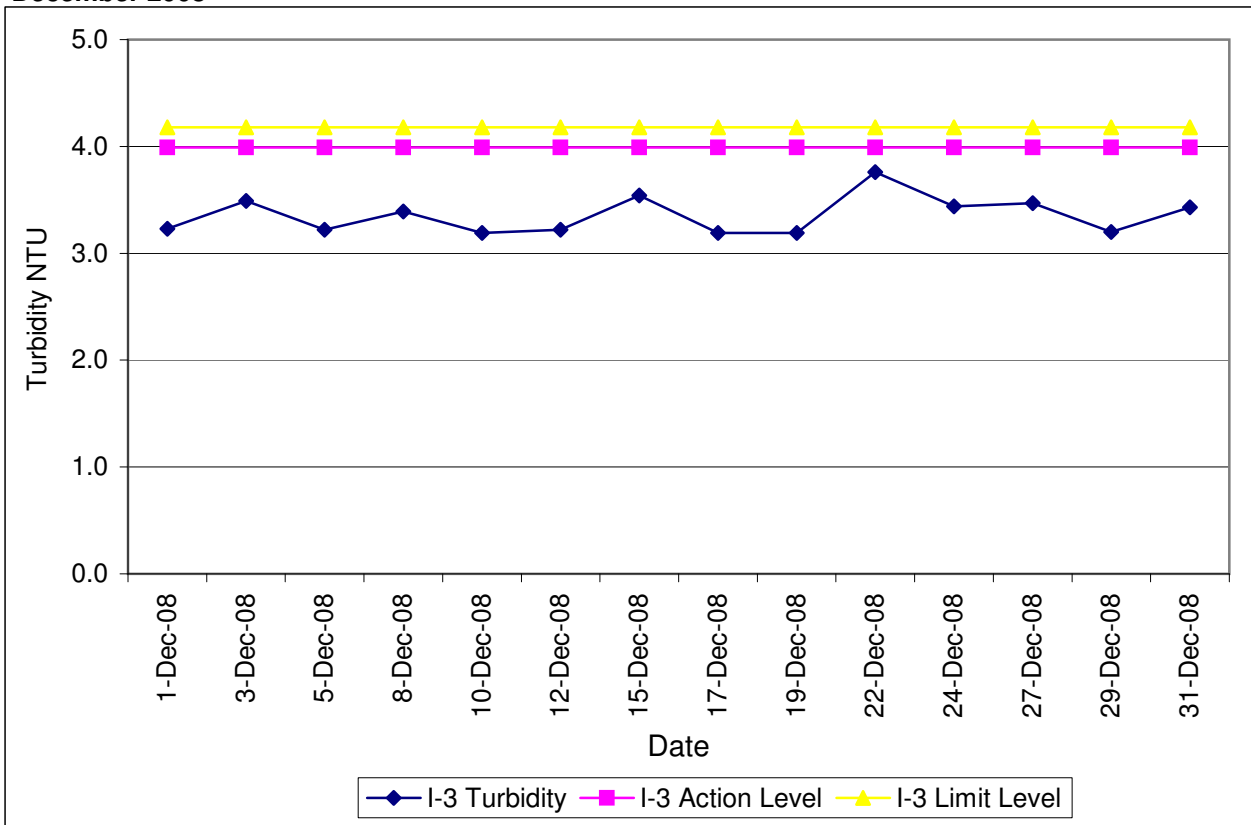
**Contract No. DC/2007/12 - Design and Construction of Tsuen Wan Drainage Tunnel
 Water Quality Results at Hong Hoi Chee Hong Temple (I-2)
 December 2008**



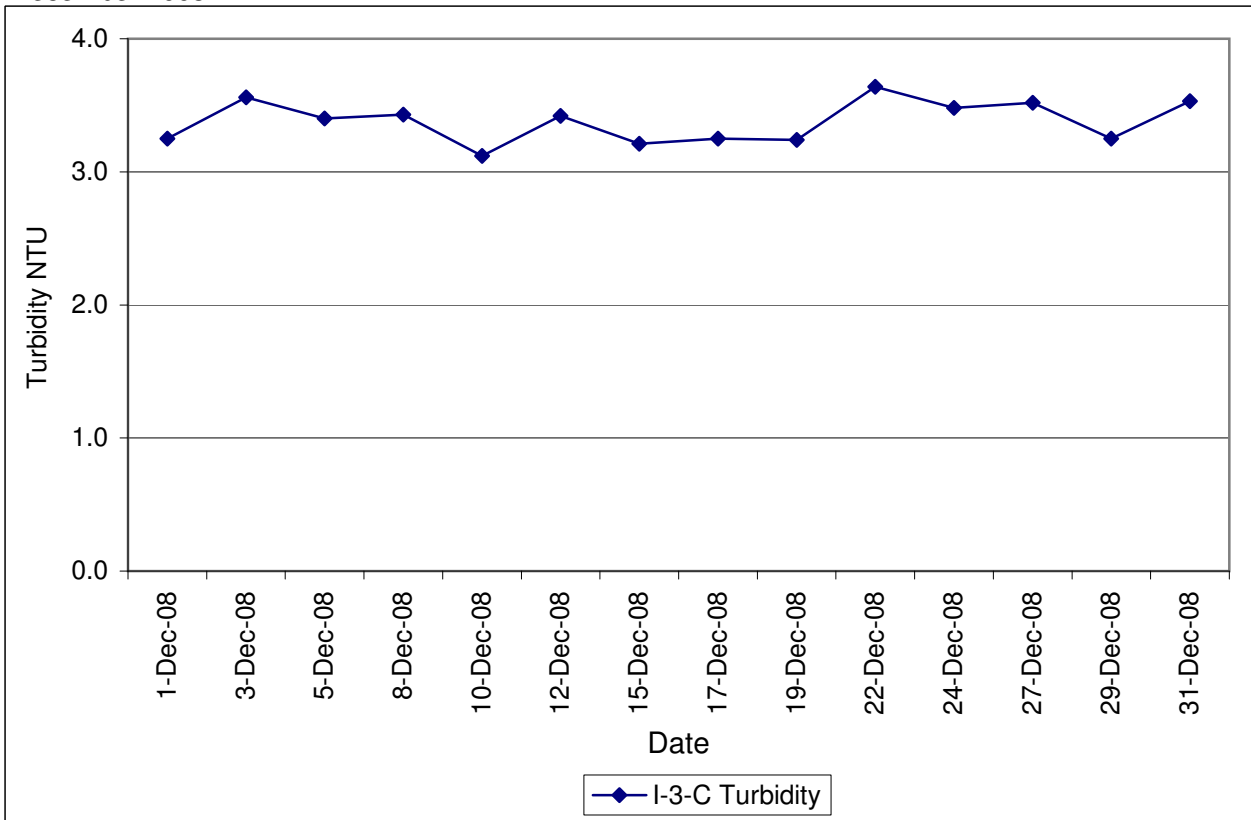
**Contract No. DC/2007/12 - Design and Construction of Tsuen Wan Drainage Tunnel
 Water Quality Results at Hong Hoi Chee Hong Temple (I-2-C)
 December 2008**



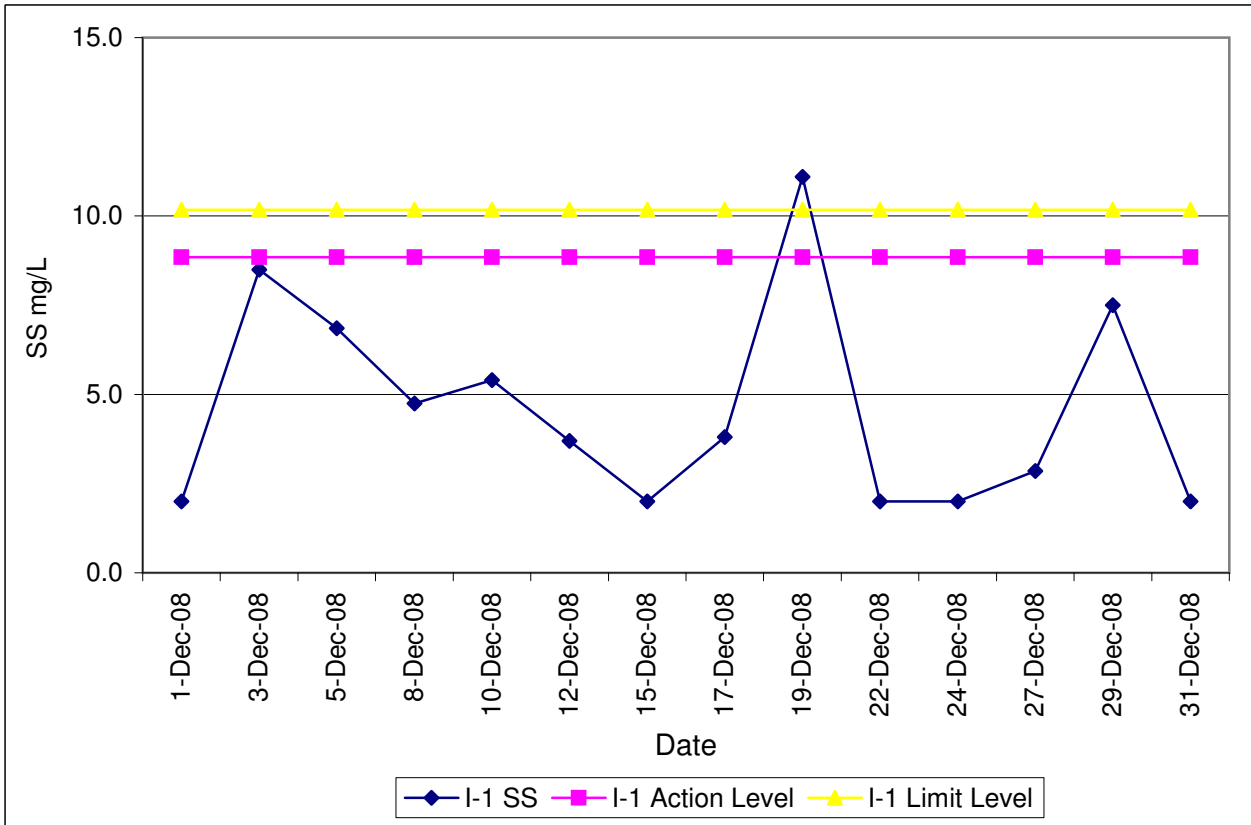
**Contract No. DC/2007/12 - Design and Construction of Tsuen Wan Drainage Tunnel
 Water Quality Results at Squatters (I-3)
 December 2008**



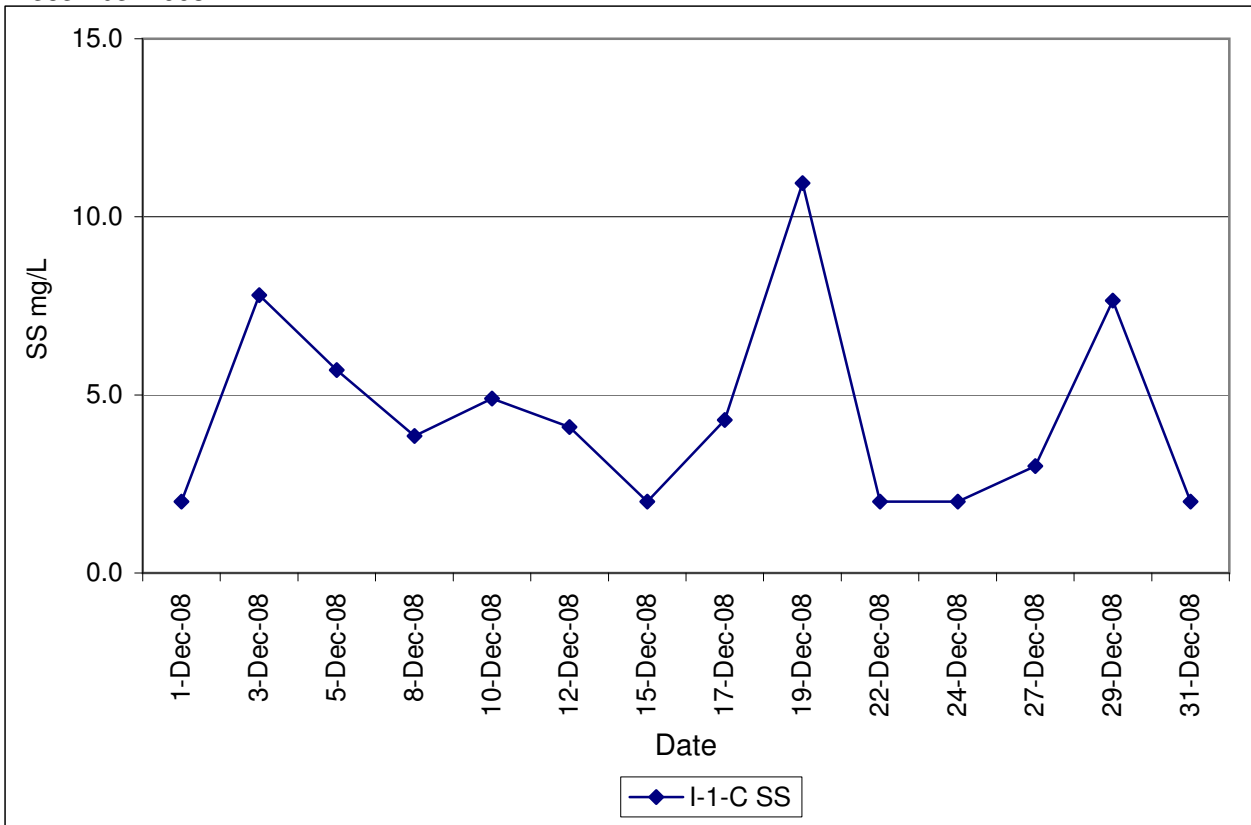
**Contract No. DC/2007/12 - Design and Construction of Tsuen Wan Drainage Tunnel
 Water Quality Results at Squatters (I-3-C)
 December 2008**



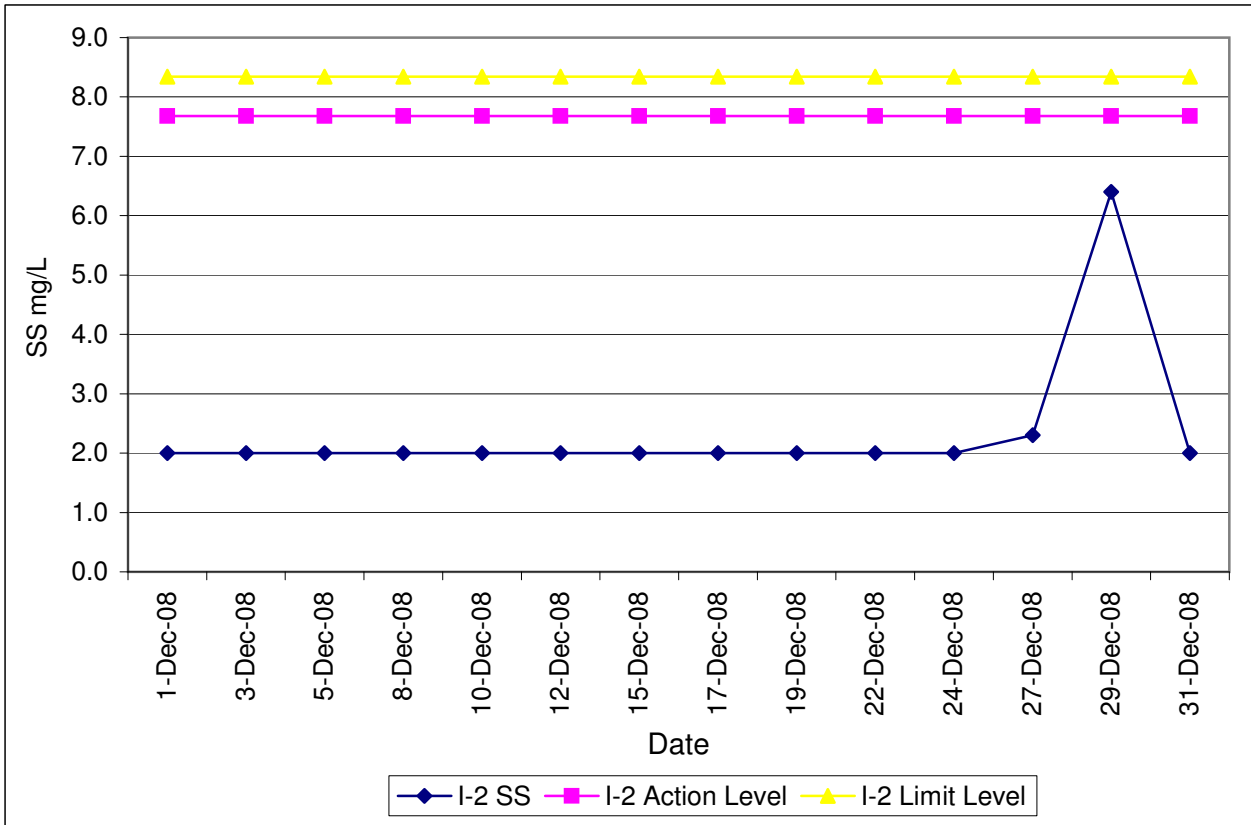
**Contract No. DC/2007/12 - Design and Construction of Tsuen Wan Drainage Tunnel
 Water Quality Results at Sik Sik Yuen Ho Fung College (I-1)
 December 2008**



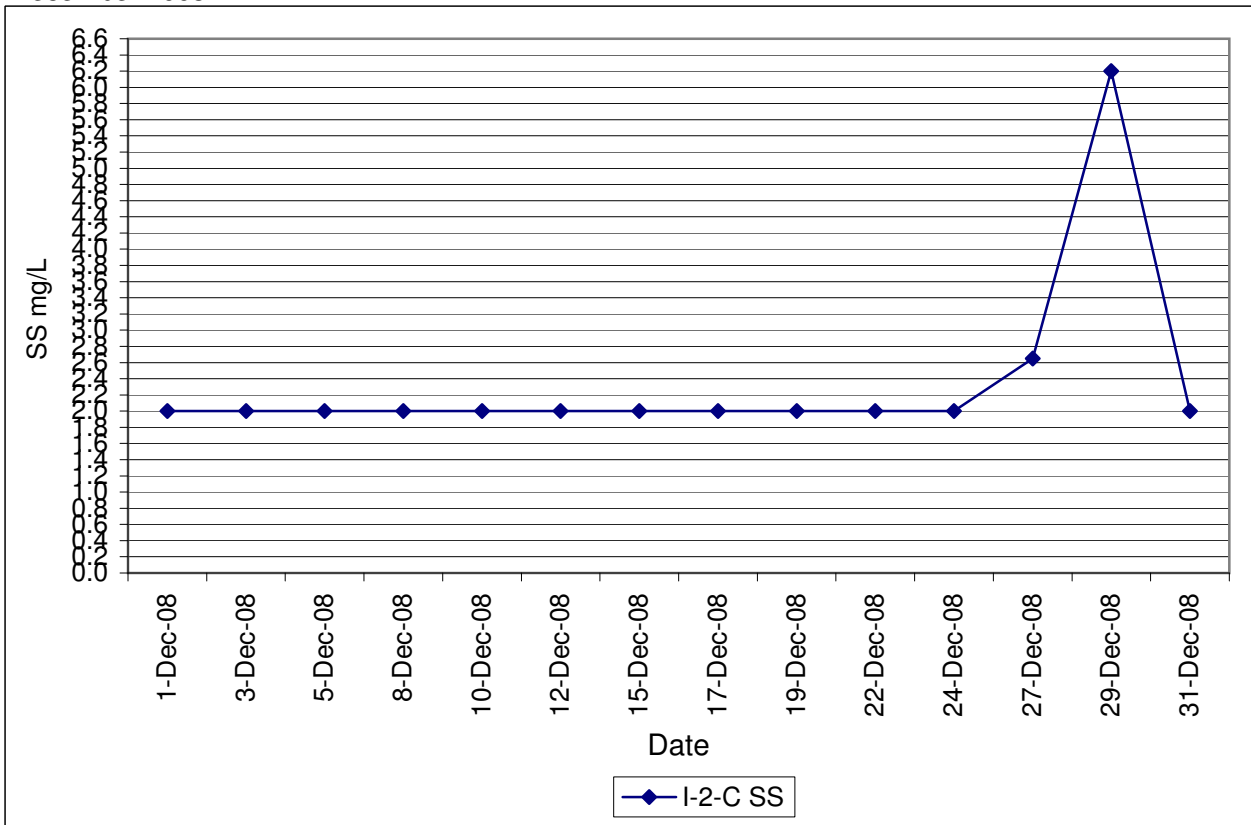
**Contract No. DC/2007/12 - Design and Construction of Tsuen Wan Drainage Tunnel
 Water Quality Results at Sik Sik Yuen Ho Fung College (I-1-C)
 December 2008**



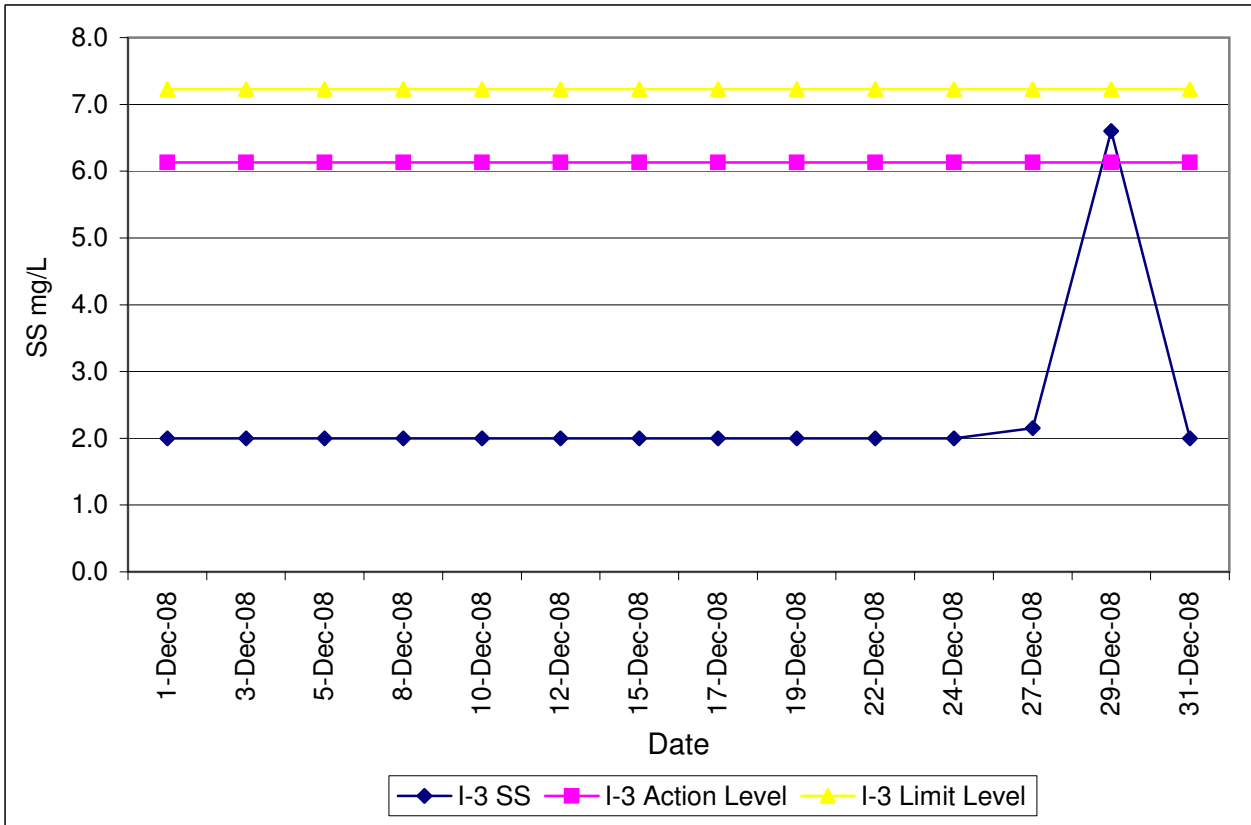
Contract No. DC/2007/12 - Design and Construction of Tsuen Wan Drainage Tunnel
Water Quality Results at Hong Hoi Chee Hong Temple (I-2)
December 2008



Contract No. DC/2007/12 - Design and Construction of Tsuen Wan Drainage Tunnel
Water Quality Results at Hong Hoi Chee Hong Temple (I-2-C)
December 2008



**Contract No. DC/2007/12 - Design and Construction of Tsuen Wan Drainage Tunnel
Water Quality Results at Squatters (I-3)
December 2008**



**Contract No. DC/2007/12 - Design and Construction of Tsuen Wan Drainage Tunnel
Water Quality Results at Squatters (I-3-C)
December 2008**

